

# Rat AGER/RAGE Recombinant Matched Antibody Pair, PBS Only

Catalog Number: **MP00734-1**

## Capture Antibody Information

**Catalog Number:**  
83759-2-PBS  
**Host:**  
Rabbit  
**Isotype:**  
IgG  
**Purification Method:**  
Protein A purification

**Clone ID:**  
240706D12  
**Reactivity:**  
rat  
**GenBank:**

**Conjugate:**  
Unconjugated  
**Full name:**  
advanced glycosylation end product-specific receptor  
**Gene ID:**  
81722

## Detection Antibody Information

**Catalog Number:**  
83759-1-PBS  
**Host:**  
Rabbit  
**Isotype:**  
IgG  
**Purification Method:**  
Protein A purification

**Clone ID:**  
240706C1  
**Reactivity:**  
rat  
**GenBank:**

**Conjugate:**  
Unconjugated  
**Full name:**  
advanced glycosylation end product-specific receptor  
**Gene ID:**  
81722

## Applications

**Tested Applications:**  
Cytometric bead array, Sandwich ELISA

**Range:**  
0.156-20 ng/mL (Cytometric Bead Array)  
15.6-1000 pg/mL (Sandwich ELISA)

**Recommended Dilutions:**  
It is recommended that this reagent should be titrated in each testing system to obtain optimal results.

## Product Information

MP00734-1 targets AGER/RAGE in immunoassays as a matched antibody pair. Validated in Cytometric bead array, Sandwich ELISA.

Capture antibody: Rat AGER/RAGE Recombinant antibody, PBS Only (Capture/Detector) 83759-2-PBS (240706D12).  
100 µg. Concentration 1 mg/mL.

Detection antibody: Rat AGER/RAGE Recombinant antibody, PBS Only (Capture/Detector) 83759-1-PBS (240706C1).  
100 µg. Concentration 1 mg/mL.

Unconjugated rabbit recombinant monoclonal antibody pair in PBS only storage buffer at a concentration of 1 mg/mL, ready for conjugation. Created using Proteintech's proprietary in-house recombinant technology. Recombinant production enables unrivalled batch-to-batch consistency, easy scale-up, and future security of supply.

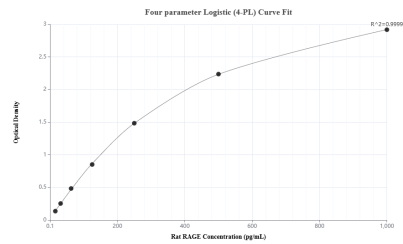
Matched antibody pairs are designed for use in a variety of assays and platforms that require matched antibody pairs.

Antibody use should be optimized for each application and assay.

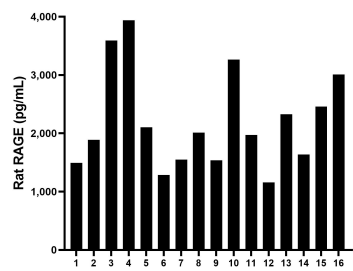
## Storage

**Storage:**  
Store at -80°C.  
**The product is shipped with ice packs. Upon receipt, store it immediately at -80°C**  
**Storage buffer:**  
PBS only

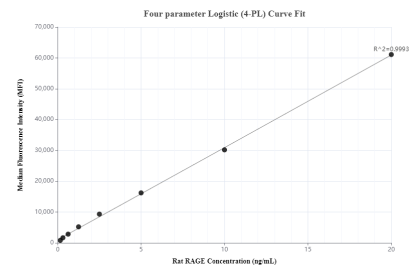
# Selected Validation Data



Sandwich ELISA standard curve of MP00734-1, Rat RAGE Recombinant Matched Antibody Pair - PBS only. 83759-2-PBS was coated to a plate as the capture antibody and incubated with serial dilutions of standard Eg1135. 83759-1-PBS was HRP conjugated as the detection antibody. Range: 15.6-1000 pg/mL



Serum of sixteen rats was measured. The rat RAGE concentration of detected samples was determined to be 2,201.2 pg/mL with a range of 1,157.8 - 3,936.9 pg/mL



Cytometric bead array standard curve of MP00734-1, Rat AGER/RAGE Recombinant Matched Antibody Pair, PBS Only. Capture antibody: 83759-2-PBS. Detection antibody: 83759-1-PBS. Standard: Eg1135. Range: 0.156-20 ng/mL