

# Mouse Apoe Recombinant Matched Antibody Pair, PBS Only

Catalog Number: MP00712-1

## Capture Antibody Information

**Catalog Number:**  
83728-3-PBS  
**Host:**  
Rabbit  
**Isotype:**  
IgG  
**Purification Method:**  
Protein A purification

**Clone ID:**  
240786D7  
**Reactivity:**  
mouse  
**GenBank:**  
NM\_001305819.1

**Conjugate:**  
Unconjugated  
**Full name:**  
Apolipoprotein E  
**Gene ID:**  
11816

## Detection Antibody Information

**Catalog Number:**  
83728-1-PBS  
**Host:**  
Rabbit  
**Isotype:**  
IgG  
**Purification Method:**  
Protein A purification

**Clone ID:**  
240786C6  
**Reactivity:**  
mouse  
**GenBank:**  
NM\_001305819.1

**Conjugate:**  
Unconjugated  
**Full name:**  
Apolipoprotein E  
**Gene ID:**  
11816

## Applications

**Tested Applications:**  
Cytometric bead array, Sandwich ELISA

**Range:**  
0.313-40 ng/mL (Cytometric Bead Array)  
0.16-10 ng/mL (Sandwich ELISA)

**Recommended Dilutions:**  
It is recommended that this reagent should be titrated in each testing system to obtain optimal results.

## Product Information

MP00712-1 targets Apoe in immunoassays as a matched antibody pair. Validated in Cytometric bead array, Sandwich ELISA.

Capture antibody: Mouse Apolipoprotein E Recombinant antibody, PBS Only (Capture) 83728-3-PBS (240786D7). 100 µg. Concentration 1 mg/mL.

Detection antibody: Mouse Apolipoprotein E Recombinant antibody, PBS Only (Detector) 83728-1-PBS (240786C6). 100 µg. Concentration 1 mg/mL.

Alternative Apoe matched antibody pairs: MP00712-2, MP50078-1

Unconjugated rabbit recombinant monoclonal antibody pair in PBS only storage buffer at a concentration of 1 mg/mL, ready for conjugation. Created using Proteintech's proprietary in-house recombinant technology. Recombinant production enables unrivalled batch-to-batch consistency, easy scale-up, and future security of supply.

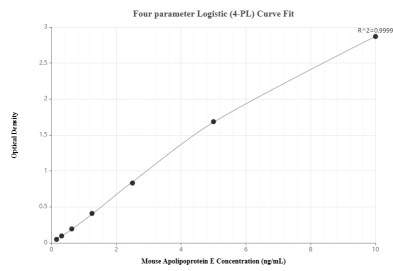
Matched antibody pairs are designed for use in a variety of assays and platforms that require matched antibody pairs.

Antibody use should be optimized for each application and assay.

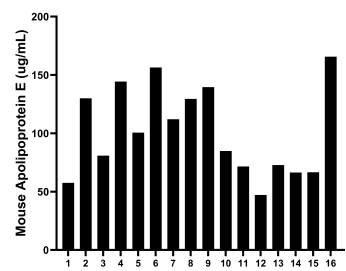
## Storage

**Storage:**  
Store at -80°C.  
**The product is shipped with ice packs. Upon receipt, store it immediately at -80°C**  
**Storage buffer:**  
PBS only

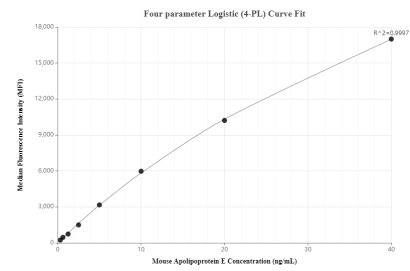
## Selected Validation Data



Sandwich ELISA standard curve of MP00712-1, Mouse Apolipoprotein E Recombinant Matched Antibody Pair - PBS only. 83728-3-PBS was coated to a plate as the capture antibody and incubated with serial dilutions of standard Eg0941. 83728-1-PBS was HRP conjugated as the detection antibody. Range: 0.16-10 ng/mL



Serum of sixteen mice was measured. The Apolipoprotein E concentration of detected samples was determined to be 101.6  $\mu$ g/mL with a range of 47.2 - 165.7  $\mu$ g/mL



Cytometric bead array standard curve of MP00712-1, MOUSE Apoe Recombinant Matched Antibody Pair, PBS Only. Capture antibody: 83728-3-PBS. Detection antibody: 83728-1-PBS. Standard: Eg1093. Range: 0.313-40 ng/mL