

IL-1RAP Recombinant Matched Antibody Pair, PBS Only

Catalog Number: MP00708-4

Capture Antibody Information

Catalog Number:
98073-1-PBS
Host:
Rabbit
Isotype:
IgG
Purification Method:
Protein A purification

Clone ID:
240756A12
Reactivity:
human
GenBank:
NM_002182.4

Conjugate:
Unconjugated
Full name:
interleukin 1 receptor accessory protein
Gene ID:
3556

Detection Antibody Information

Catalog Number:
83726-5-PBS
Host:
Rabbit
Isotype:
IgG
Purification Method:
Protein A purification

Clone ID:
240756E7
Reactivity:
human
GenBank:
NM_002182.4

Conjugate:
Unconjugated
Full name:
interleukin 1 receptor accessory protein
Gene ID:
3556

Applications

Tested Applications:
Sandwich ELISA

Range:
7.8-500 pg/mL (Sandwich ELISA)

Recommended Dilutions:
It is recommended that this reagent should be titrated in each testing system to obtain optimal results.

Product Information

MP00708-4 targets IL-1RAP in immunoassays as a matched antibody pair. Validated in Sandwich ELISA.

Capture antibody: IL-1RAP Recombinant antibody, PBS Only (Capture) 98073-1-PBS (240756A12). 100 µg. Concentration 1 mg/mL.

Detection antibody: IL-1RAP Recombinant antibody, PBS Only (Detector) 83726-5-PBS (240756E7). 100 µg. Concentration 1 mg/mL.

Unconjugated rabbit recombinant monoclonal antibody pair in PBS only storage buffer at a concentration of 1 mg/mL, ready for conjugation. Created using Proteintech's proprietary in-house recombinant technology. Recombinant production enables unrivalled batch-to-batch consistency, easy scale-up, and future security of supply.

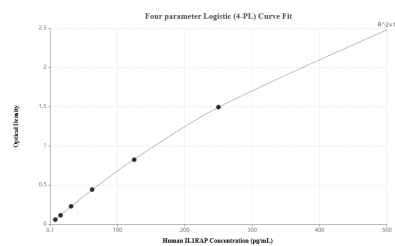
Matched antibody pairs are designed for use in a variety of assays and platforms that require matched antibody pairs.

Antibody use should be optimized for each application and assay.

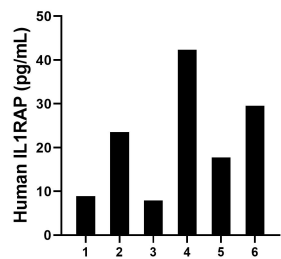
Storage

Storage:
Store at -80°C.
The product is shipped with ice packs. Upon receipt, store it immediately at -80°C
Storage buffer:
PBS only

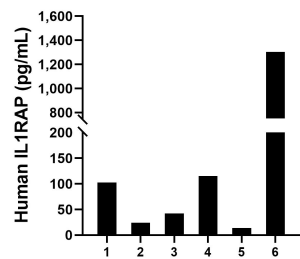
Selected Validation Data



Sandwich ELISA standard curve of MP00708-4, Human IL-1RAP Recombinant Matched Antibody Pair - PBS only. 98073-1-PBS was coated to a plate as the capture antibody and incubated with serial dilutions of standard Eg0827. 83726-5-PBS was HRP conjugated as the detection antibody. Range: 7.8-500 pg/mL



Serum of six individual healthy human donors was measured. The human IL-1RAP concentration of detected samples was determined to be 21.67 pg/mL with a range of 7.89 - 42.37 pg/mL



Plasma of six individual healthy human donors was measured. The human IL-1RAP concentration of detected samples was determined to be 266.79 pg/mL with a range of 13.79 - 1,302.80 pg/mL