

# Mesothelin Recombinant Matched Antibody Pair, PBS Only

Catalog Number: **MP00697-2**

## Capture Antibody Information

**Catalog Number:**  
83744-5-PBS

**Host:**  
Rabbit

**Isotype:**  
IgG

**Purification Method:**  
Protein A purification

**Clone ID:**  
240795G1

**Reactivity:**  
human

**GenBank:**  
NM\_005823

**Immunogen Catalog Number:**  
Eg31658

**Conjugate:**  
Unconjugated

**Full name:**  
mesothelin

**Gene ID:**  
10232

## Detection Antibody Information

**Catalog Number:**  
83744-2-PBS

**Host:**  
Rabbit

**Isotype:**  
IgG

**Purification Method:**  
Protein A purification

**Clone ID:**  
240795G5

**Reactivity:**  
human

**GenBank:**  
NM\_005823

**Immunogen Catalog Number:**  
Eg31658

**Conjugate:**  
Unconjugated

**Full name:**  
mesothelin

**Gene ID:**  
10232

## Applications

**Tested Applications:**  
Cytometric bead array, Sandwich ELISA

**Range:**  
0.625-80 ng/mL (Cytometric Bead Array)  
39.1-2500 pg/mL (Sandwich ELISA)

**Recommended Dilutions:**  
It is recommended that this reagent should be titrated in each testing system to obtain optimal results.

## Product Information

MP00697-2 targets Mesothelin in immunoassays as a matched antibody pair. Validated in Cytometric bead array, Sandwich ELISA.

Capture antibody: Mesothelin Recombinant antibody, PBS Only (Capture) 83744-5-PBS (240795G1). 100 µg. Concentration 1 mg/mL.

Detection antibody: Mesothelin Recombinant antibody, PBS Only (Detector) 83744-2-PBS (240795G5). 100 µg. Concentration 1 mg/mL.

Unconjugated rabbit recombinant monoclonal antibody pair in PBS only storage buffer at a concentration of 1 mg/mL, ready for conjugation. Created using Proteintech's proprietary in-house recombinant technology. Recombinant production enables unrivalled batch-to-batch consistency, easy scale-up, and future security of supply.

Matched antibody pairs are designed for use in a variety of assays and platforms that require matched antibody pairs.

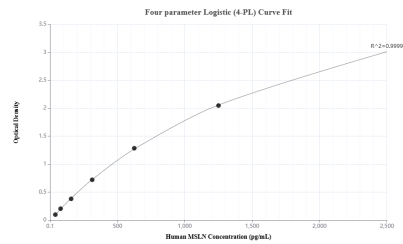
Antibody use should be optimized for each application and assay.

## Storage

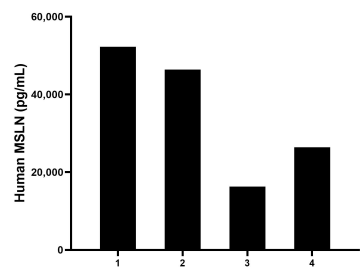
**Storage:**  
Store at -80°C.  
**The product is shipped with ice packs. Upon receipt, store it immediately at -80°C**

**Storage buffer:**  
PBS only

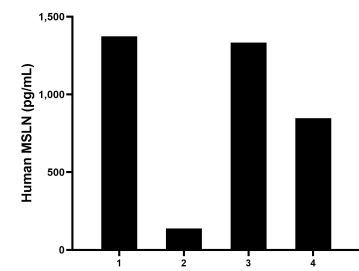
Selected Validation Data



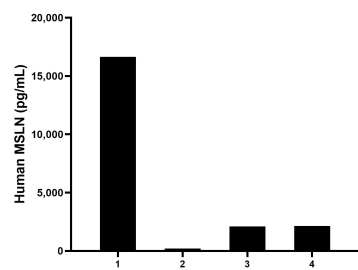
Sandwich ELISA standard curve of MP00697-2, Human MSLN/Mesothelin Recombinant Matched Antibody Pair - PBS only. 83744-5-PBS was coated to a plate as the capture antibody and incubated with serial dilutions of standard Eg31658. 83744-2-PBS was HRP conjugated as the detection antibody. Range: 39.1-2500 pg/mL



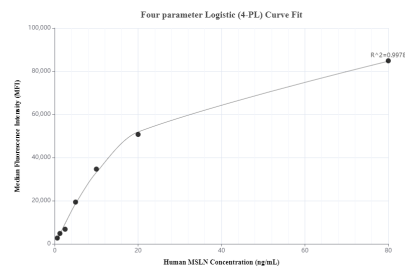
Serum of four humans was measured. The human MSLN/Mesothelin concentration of detected samples was determined to be 35,341.8 pg/mL with a range of 16,291.9 - 52,246.0 pg/mL



Urine of four humans was measured. The human MSLN/Mesothelin concentration of detected samples was determined to be 923.5 pg/mL with a range of 138.7 - 1,373.8 pg/mL



Saliva of four humans was measured. The human MSLN/Mesothelin concentration of detected samples was determined to be 5,273.4 pg/mL with a range of 209.0 - 16,634.9 pg/mL



Cytometric bead array standard curve of MP00697-2, MSLN/Mesothelin Recombinant Matched Antibody Pair, PBS Only. Capture antibody: 83744-5-PBS. Detection antibody: 83744-2-PBS. Standard: Eg31658. Range: 0.625-80 ng/mL