

Mouse RAGE Recombinant Matched Antibody Pair, PBS Only

Catalog Number: **MP00693-4**

Capture Antibody Information

Catalog Number:
83742-6-PBS
Host:
Rabbit
Isotype:
IgG
Purification Method:
Protein A purification

Clone ID:
240774E5
Reactivity:
mouse
GenBank:
NM_007425.3

Conjugate:
Unconjugated
Full name:
advanced glycosylation end product-specific receptor
Gene ID:
11596

Detection Antibody Information

Catalog Number:
83742-4-PBS
Host:
Rabbit
Isotype:
IgG
Purification Method:
Protein A purification

Clone ID:
240774H4
Reactivity:
mouse
GenBank:
NM_007425.3

Conjugate:
Unconjugated
Full name:
advanced glycosylation end product-specific receptor
Gene ID:
11596

Applications

Tested Applications:
Sandwich ELISA

Range:
62.5-4000 pg/mL (Sandwich ELISA)

Recommended Dilutions:
It is recommended that this reagent should be titrated in each testing system to obtain optimal results.

Product Information

MP00693-4 targets RAGE in immunoassays as a matched antibody pair. Validated in Sandwich ELISA.

Capture antibody: Mouse RAGE Recombinant antibody, PBS Only (Capture) 83742-6-PBS (240774E5). 100 µg. Concentration 1 mg/mL.

Detection antibody: Mouse RAGE Recombinant antibody, PBS Only (Capture/Detector) 83742-4-PBS (240774H4). 100 µg. Concentration 1 mg/mL.

Unconjugated rabbit recombinant monoclonal antibody pair in PBS only storage buffer at a concentration of 1 mg/mL, ready for conjugation. Created using Proteintech's proprietary in-house recombinant technology. Recombinant production enables unrivalled batch-to-batch consistency, easy scale-up, and future security of supply.

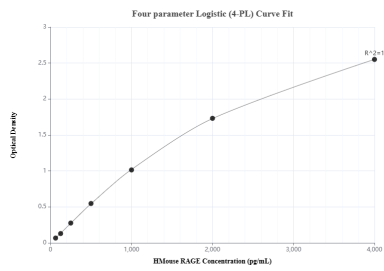
Matched antibody pairs are designed for use in a variety of assays and platforms that require matched antibody pairs.

Antibody use should be optimized for each application and assay.

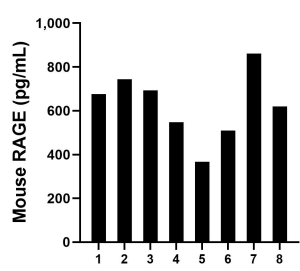
Storage

Storage:
Store at -80°C.
The product is shipped with ice packs. Upon receipt, store it immediately at -80°C
Storage buffer:
PBS only

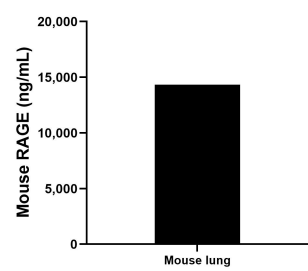
Selected Validation Data



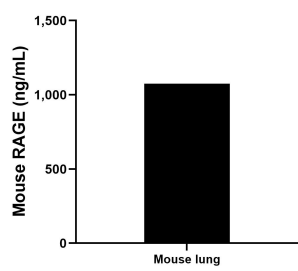
Sandwich ELISA standard curve of MP00693-4, Human RAGE Recombinant Matched Antibody Pair - PBS only. 83742-6-PBS was coated to a plate as the capture antibody and incubated with serial dilutions of standard Eg0873. 83742-4-PBS was HRP conjugated as the detection antibody. Range: 62.5-4000 pg/mL



Serum of eight mice was measured. The mouse RAGE concentration of detected samples was determined to be 627.1 pg/mL with a range of 366.3 - 860.7 pg/mL.



The mean RAGE concentration was determined to be 14,337.96 ng/mL in mouse lung tissue extract based on a 3.8 mg/mL extract load.



Mouse lung tissue was cultured in RPMI supplemented with 10% fetal bovine serum for 5 days. An aliquot of the cell culture supernate was removed, assayed for mouse RAGE and measured 1,075.53 ng/mL.