

For Research Use Only

RAE1 Recombinant Matched Antibody Pair, PBS Only



Catalog Number:MP00683-4

Capture Antibody Information

Catalog Number:
83712-5-PBS
Host:
Rabbit
Isotype:
IgG
Purification Method:
Protein A purification

Clone ID:
240861G1
Reactivity:
human
GenBank:
BC103754
Immunogen Catalog Number:
Ag12102

Conjugate:
Unconjugated
Full name:
RAE1 RNA export 1 homolog (S. pombe)
Gene ID:
8480

Detection Antibody Information

Catalog Number:
83712-3-PBS
Host:
Rabbit
Isotype:
IgG
Purification Method:
Protein A purification

Clone ID:
240861H8
Reactivity:
human
GenBank:
BC103754
Immunogen Catalog Number:
Ag12102

Conjugate:
Unconjugated
Full name:
RAE1 RNA export 1 homolog (S. pombe)
Gene ID:
8480

Applications

Tested Applications:
Sandwich ELISA

Range:
78.1-5000 pg/mL (Sandwich ELISA)

Recommended Dilutions:
It is recommended that this reagent should be titrated in each testing system to obtain optimal results.

Product Information

MP00683-4 targets RAE1 in immunoassays as a matched antibody pair. Validated in Sandwich ELISA.

Capture antibody: RAE1 Recombinant antibody, PBS Only (Capture) 83712-5-PBS (240861G1). 100 µg. Concentration 1 mg/mL.

Detection antibody: RAE1 Recombinant antibody, PBS Only (Capture/Detector) 83712-3-PBS (240861H8). 100 µg. Concentration 1 mg/mL.

Unconjugated rabbit recombinant monoclonal antibody pair in PBS only storage buffer at a concentration of 1 mg/mL, ready for conjugation. Created using Proteintech's proprietary in-house recombinant technology. Recombinant production enables unrivalled batch-to-batch consistency, easy scale-up, and future security of supply.

Matched antibody pairs are designed for use in a variety of assays and platforms that require matched antibody pairs.

Antibody use should be optimized for each application and assay.

Storage

Storage:
Store at -80°C.
The product is shipped with ice packs. Upon receipt, store it immediately at -80°C
Storage buffer:
PBS only

For technical support and original validation data for this product please contact:

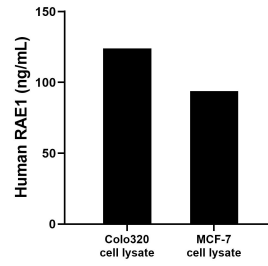
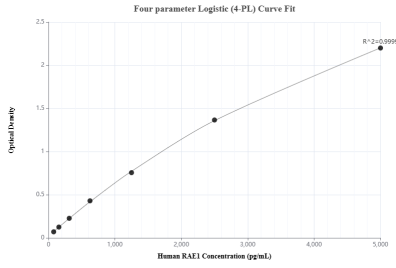
T: 4006900926

E: Proteintech-CN@ptglab.com

W: ptgcn.com

This product is exclusively available under Proteintech Group brand and is not available to purchase from any other manufacturer.

Selected Validation Data



Sandwich ELISA standard curve of MP00683-4, Human RAE1 Recombinant Matched Antibody Pair - PBS only. 83712-5-PBS was coated to a plate as the capture antibody and incubated with serial dilutions of standard Ag12102. 83712-3-PBS was HRP conjugated as the detection antibody. Range: 78.1-5000 pg/mL

Colo320 and MCF-7 cell lysates were measured. The human RAE1 concentration of detected samples was determined to be 123.92 ng/mL (based on a 2.00 mg/mL extract load) in Colo320 cell lysate and 93.86 ng/mL (based on a 1.20 mg/mL extract load) in MCF-7 cell lysate.