

CHI3L1/YKL40 Recombinant Matched Antibody Pair, PBS Only

Catalog Number: **MP00663-4**

Capture Antibody Information

Catalog Number: 83685-6-PBS	Clone ID: 253193A1	Conjugate: Unconjugated
Host: Rabbit	Reactivity: human	Full name: chitinase 3-like 1 (cartilage glycoprotein-39)
Isotype: IgG	GenBank: NM_001276.4	Gene ID: 1116
Purification Method: Protein A purification	Immunogen Catalog Number: Eg4992	

Detection Antibody Information

Catalog Number: 83685-5-PBS	Clone ID: 253193B1	Conjugate: Unconjugated
Host: Rabbit	Reactivity: human	Full name: chitinase 3-like 1 (cartilage glycoprotein-39)
Isotype: IgG	GenBank: NM_001276.4	Gene ID: 1116
Purification Method: Protein A purification	Immunogen Catalog Number: Eg4992	

Applications

Tested Applications: Cytometric bead array	Range: 0.312-40 ng/mL (Cytometric Bead Array)	Recommended Dilutions: It is recommended that this reagent should be titrated in each testing system to obtain optimal results.
--	---	---

Product Information

MP00663-4 targets CHI3L1/YKL40 in immunoassays as a matched antibody pair. Validated in Cytometric bead array.

Capture antibody: Chitinase 3-like 1/CHI3L1 Recombinant monoclonal antibody, PBS Only (Capture) 83685-6-PBS (253193A1). 100 µg. Concentration 1 mg/mL.

Detection antibody: Chitinase 3-like 1/CHI3L1 Recombinant monoclonal antibody, PBS Only (Detector) 83685-5-PBS (253193B1). 100 µg. Concentration 1 mg/mL.

Unconjugated rabbit recombinant monoclonal antibody pair in PBS only storage buffer at a concentration of 1 mg/mL, ready for conjugation. Created using Proteintech's proprietary in-house recombinant technology. Recombinant production enables unrivalled batch-to-batch consistency, easy scale-up, and future security of supply.

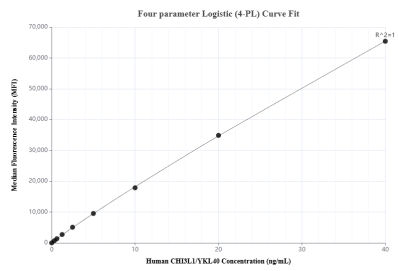
Matched antibody pairs are designed for use in a variety of assays and platforms that require matched antibody pairs.

Antibody use should be optimized for each application and assay.

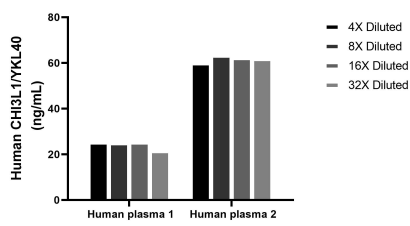
Storage

Storage:
Store at -80°C.
The product is shipped with ice packs. Upon receipt, store it immediately at -80°C
Storage buffer:
PBS only

Selected Validation Data



Cytometric bead array standard curve of MP00663-4, CHI3L1/YKL40 Recombinant Matched Antibody Pair, PBS Only. Capture antibody: 83685-6-PBS. Detection antibody: 83685-5-PBS. Standard: Eg4992. Range: 0.312-40 ng/mL



The mean CHI3L1/YKL40 concentration was determined to be 24.2 ng/mL in human plasma 1, 61.8 ng/mL in human plasma 2.