

For Research Use Only

# TNFSF15 Recombinant Matched Antibody Pair, PBS Only



Catalog Number:MP00659-2

## Capture Antibody Information

**Catalog Number:**  
83700-5-PBS  
**Host:**  
Rabbit  
**Isotype:**  
IgG  
**Purification Method:**  
Protein A purification

**Clone ID:**  
251018F5  
**Reactivity:**  
human  
**GenBank:**  
BC074941  
**Immunogen Catalog Number:**  
Eg32092

**Conjugate:**  
Unconjugated  
**Full name:**  
tumor necrosis factor (ligand) superfamily, member 15  
**Gene ID:**  
9966

## Detection Antibody Information

**Catalog Number:**  
83700-4-PBS  
**Host:**  
Rabbit  
**Isotype:**  
IgG  
**Purification Method:**  
Protein A purification

**Clone ID:**  
251018F8  
**Reactivity:**  
human  
**GenBank:**  
BC074941  
**Immunogen Catalog Number:**  
Eg32092

**Conjugate:**  
Unconjugated  
**Full name:**  
tumor necrosis factor (ligand) superfamily, member 15  
**Gene ID:**  
9966

## Applications

**Tested Applications:**  
Sandwich ELISA

**Range:**  
39.1-2500 pg/mL (Sandwich ELISA)

**Recommended Dilutions:**  
It is recommended that this reagent should be titrated in each testing system to obtain optimal results.

## Product Information

MP00659-2 targets TNFSF15 in immunoassays as a matched antibody pair. Validated in Sandwich ELISA.

Capture antibody: TNFSF15 Recombinant antibody, PBS Only (Capture) 83700-5-PBS (251018F5). 100 µg. Concentration 1 mg/mL.

Detection antibody: TNFSF15 Recombinant antibody, PBS Only (Detector) 83700-4-PBS (251018F8). 100 µg. Concentration 1 mg/mL.

Unconjugated rabbit recombinant monoclonal antibody pair in PBS only storage buffer at a concentration of 1 mg/mL, ready for conjugation. Created using Proteintech's proprietary in-house recombinant technology. Recombinant production enables unrivalled batch-to-batch consistency, easy scale-up, and future security of supply.

Matched antibody pairs are designed for use in a variety of assays and platforms that require matched antibody pairs.

Antibody use should be optimized for each application and assay.

## Storage

**Storage:**  
Store at -80°C.  
**The product is shipped with ice packs. Upon receipt, store it immediately at -80°C**  
**Storage buffer:**  
PBS only

For technical support and original validation data for this product please contact:

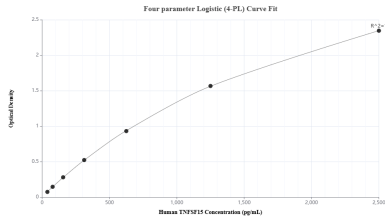
T: 4006900926

E: Proteintech-CN@ptglab.com

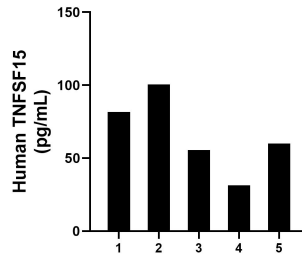
W: ptgcn.com

**This product is exclusively available under Proteintech Group brand and is not available to purchase from any other manufacturer.**

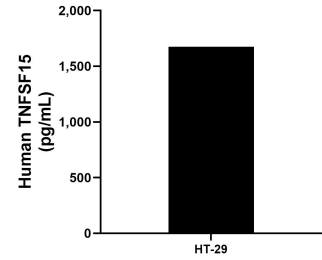
## Selected Validation Data



Sandwich ELISA standard curve of MP00659-2, Human TNFSF15 Recombinant Matched Antibody Pair - PBS only. 83700-5-PBS was coated to a plate as the capture antibody and incubated with serial dilutions of standard Eg32092. 83700-4-PBS was HRP conjugated as the detection antibody. Range: 39.1-2500 pg/mL



Plasma of five individual healthy human donors was measured. The human TNFSF15 concentration of detected samples was determined to be 65.8 pg/mL with a range of 31.3-100.4 pg/mL.



HT-29 human colon carcinoma cells were cultured in RPMI-1640 supplemented with 10% fetal bovine serum, 100 U/mL penicillin and 100  $\mu$ g/mL streptomycin sulfate. An aliquot of the culture supernates were removed, assayed for human TNFSF15, and measured 1,674.8 pg/mL.