

SLC4A7 Recombinant Matched Antibody Pair, PBS Only

Catalog Number: MP00654-1

Capture Antibody Information

Catalog Number:
83676-3-PBS
Host:
Rabbit
Isotype:
IgG
Purification Method:
Protein A purification

Clone ID:
240689C10
Reactivity:
Human
GenBank:
NM_003615
Immunogen Catalog Number:
Ag30545

Conjugate:
Unconjugated
Full name:
solute carrier family 4, sodium bicarbonate cotransporter, member 7
Gene ID:
9497

Detection Antibody Information

Catalog Number:
83676-2-PBS
Host:
Rabbit
Isotype:
IgG
Purification Method:
Protein A purification

Clone ID:
240689F3
Reactivity:
Human
GenBank:
NM_003615
Immunogen Catalog Number:
Ag30545

Conjugate:
Unconjugated
Full name:
solute carrier family 4, sodium bicarbonate cotransporter, member 7
Gene ID:
9497

Applications

Tested Applications:
Cytometric bead array

Range:
0.313-40 ng/mL (Cytometric Bead Array)

Recommended Dilutions:
It is recommended that this reagent should be titrated in each testing system to obtain optimal results.

Product Information

MP00654-1 targets SLC4A7 in immunoassays as a matched antibody pair. Validated in Cytometric bead array.

Capture antibody: SLC4A7 Recombinant antibody, PBS Only (Capture) 83676-3-PBS (240689C10). 100 µg. Concentration 1 mg/mL.

Detection antibody: SLC4A7 Recombinant antibody, PBS Only (Detector) 83676-2-PBS (240689F3). 100 µg. Concentration 1 mg/mL.

Alternative SLC4A7 matched antibody pairs: MP00654-2, MP00654-3

Unconjugated rabbit recombinant monoclonal antibody pair in PBS only storage buffer at a concentration of 1 mg/mL, ready for conjugation. Created using Proteintech's proprietary in-house recombinant technology. Recombinant production enables unrivalled batch-to-batch consistency, easy scale-up, and future security of supply.

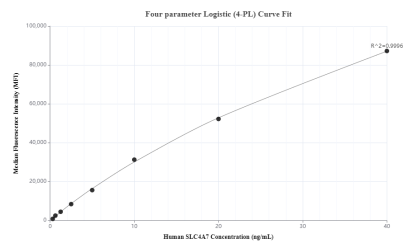
Matched antibody pairs are designed for use in a variety of assays and platforms that require matched antibody pairs.

Antibody use should be optimized for each application and assay.

Storage

Storage:
Store at -80°C.
Storage buffer:
PBS only

Selected Validation Data



Cytometric bead array standard curve of MP00654-1, SLC4A7 Recombinant Matched Antibody Pair, PBS Only. Capture antibody: 83676-3-PBS. Detection antibody: 83676-2-PBS. Standard: Ag30545. Range: 0.313-40 ng/mL