

Rat Albumin Recombinant Matched Antibody Pair, PBS Only

Catalog Number: MP00652-4

Capture Antibody Information

Catalog Number:

83697-3-PBS

Host:

Rabbit

Isotype:

IgG

Purification Method:

Protein A purification

Clone ID:

240745A5

Reactivity:

rat

GenBank:

Conjugate:

Unconjugated

Full name:

albumin

Gene ID:

24186

Detection Antibody Information

Catalog Number:

83697-4-PBS

Host:

Rabbit

Isotype:

IgG

Purification Method:

Protein A purification

Clone ID:

240745E4

Reactivity:

rat

GenBank:

Conjugate:

Unconjugated

Full name:

albumin

Gene ID:

24186

Applications

Tested Applications:

Sandwich ELISA

Range:

0.31-20 ng/mL (Sandwich ELISA)

Recommended Dilutions:

It is recommended that this reagent should be titrated in each testing system to obtain optimal results.

Product Information

MP00652-4 targets Albumin in immunoassays as a matched antibody pair. Validated in Sandwich ELISA.

Capture antibody: Rat Albumin Recombinant antibody, PBS Only (Capture/Detector) 83697-3-PBS (240745A5). 100 μ g. Concentration 1 mg/mL.

Detection antibody: Rat Albumin Recombinant antibody, PBS Only (Detector) 83697-4-PBS (240745E4). 100 μ g. Concentration 1 mg/mL.

Unconjugated rabbit recombinant monoclonal antibody pair in PBS only storage buffer at a concentration of 1 mg/mL, ready for conjugation. Created using Proteintech's proprietary in-house recombinant technology. Recombinant production enables unrivalled batch-to-batch consistency, easy scale-up, and future security of supply.

Matched antibody pairs are designed for use in a variety of assays and platforms that require matched antibody pairs.

Antibody use should be optimized for each application and assay.

Storage

Storage:

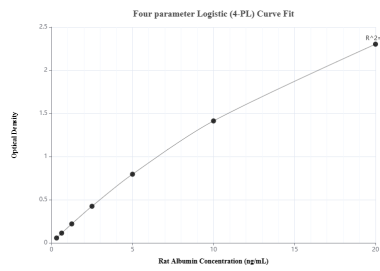
Store at -80°C.

The product is shipped with ice packs. Upon receipt, store it immediately at -80°C

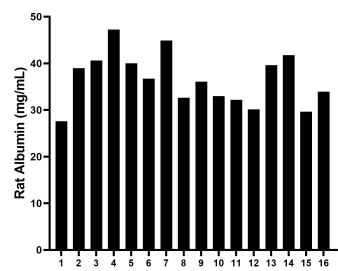
Storage buffer:

PBS only

Selected Validation Data



Sandwich ELISA standard curve of MP00652-4, Rat Albumin Recombinant Matched Antibody Pair - PBS only. 83697-3-PBS was coated to a plate as the capture antibody and incubated with serial dilutions of standard Eg0935. 83697-4-PBS was HRP conjugated as the detection antibody. Range: 0.31-20 ng/mL



Serum of sixteen rats was measured. The Albumin concentration of detected samples was determined to be 36.6 mg/mL with a range of 27.6 - 47.2 mg/mL.