

# Rat Albumin Recombinant Matched Antibody Pair, PBS Only

Catalog Number: **MP00652-2**

## Capture Antibody Information

**Catalog Number:**  
83697-2-PBS  
**Host:**  
Rabbit  
**Isotype:**  
IgG  
**Purification Method:**  
Protein A purification

**Clone ID:**  
240745C4  
**Reactivity:**  
rat  
**GenBank:**  
**Immunogen Catalog Number:**  
Eg0935

**Conjugate:**  
Unconjugated  
**Full name:**  
albumin  
**Gene ID:**  
24186

## Detection Antibody Information

**Catalog Number:**  
83697-3-PBS  
**Host:**  
Rabbit  
**Isotype:**  
IgG  
**Purification Method:**  
Protein A purification

**Clone ID:**  
240745A5  
**Reactivity:**  
rat  
**GenBank:**  
**Immunogen Catalog Number:**  
Eg0935

**Conjugate:**  
Unconjugated  
**Full name:**  
albumin  
**Gene ID:**  
24186

## Applications

**Tested Applications:**  
Cytometric bead array

**Range:**  
0.625-80 ng/mL (Cytometric Bead Array)

**Recommended Dilutions:**  
It is recommended that this reagent should be titrated in each testing system to obtain optimal results.

## Product Information

MP00652-2 targets Albumin in immunoassays as a matched antibody pair. Validated in Cytometric bead array.

Capture antibody: Rat Albumin Recombinant antibody, PBS Only 83697-2-PBS (240745C4). 100 µg. Concentration 1 mg/mL.

Detection antibody: Rat Albumin Recombinant antibody, PBS Only (Capture) 83697-3-PBS (240745A5). 100 µg. Concentration 1 mg/mL.

Unconjugated rabbit recombinant monoclonal antibody pair in PBS only storage buffer at a concentration of 1 mg/mL, ready for conjugation. Created using Proteintech's proprietary in-house recombinant technology. Recombinant production enables unrivalled batch-to-batch consistency, easy scale-up, and future security of supply.

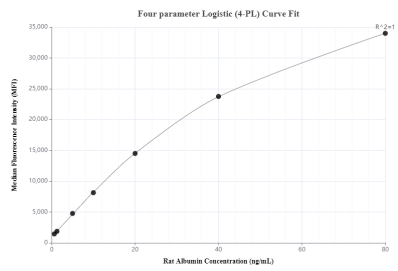
Matched antibody pairs are designed for use in a variety of assays and platforms that require matched antibody pairs.

Antibody use should be optimized for each application and assay.

## Storage

**Storage:**  
Store at -80°C.  
**The product is shipped with ice packs. Upon receipt, store it immediately at -80°C**  
**Storage buffer:**  
PBS only

# Selected Validation Data



Cytometric bead array standard curve of MP00652-2, RAT Albumin Recombinant Matched Antibody Pair, PBS Only. Capture antibody: 83697-2-PBS. Detection antibody: 83697-3-PBS. Standard: Eg0935. Range: 0.625-80 ng/mL.