

FTCD Recombinant Matched Antibody Pair, PBS Only

Catalog Number: MP00636-3

Capture Antibody Information

| | | |
|--|--------------------------------------|--|
| Catalog Number: 83664-2-PBS | Clone ID: 240654G9 | Conjugate: Unconjugated |
| Host: Rabbit | Reactivity: human, mouse, rat | Full name: formiminotransferase cyclodeaminase |
| Isotype: IgG | GenBank: BC136395 | Gene ID: 10841 |
| Purification Method: Protein A purification | Immunogen Catalog Number: Ag16646 | |

Detection Antibody Information

| | | |
|--|--------------------------------------|--|
| Catalog Number: 83664-4-PBS | Clone ID: 240654C9 | Conjugate: Unconjugated |
| Host: Rabbit | Reactivity: human | Full name: formiminotransferase cyclodeaminase |
| Isotype: IgG | GenBank: BC136395 | Gene ID: 10841 |
| Purification Method: Protein A purification | Immunogen Catalog Number: Ag16646 | |

Applications

| | | |
|--|---|--|
| Tested Applications: Sandwich ELISA | Range: 125-8000 pg/mL (Sandwich ELISA) | Recommended Dilutions: It is recommended that this reagent should be titrated in each testing system to obtain optimal results. |
|--|---|--|

Product Information

MP00636-3 targets FTCD in immunoassays as a matched antibody pair. Validated in Sandwich ELISA.

Capture antibody: FTCD Recombinant antibody, PBS Only (Capture) 83664-2-PBS (240654G9). 100 µg. Concentration 1 mg/mL.

Detection antibody: FTCD Recombinant antibody, PBS Only (Detector) 83664-4-PBS (240654C9). 100 µg. Concentration 1 mg/mL.

Unconjugated rabbit recombinant monoclonal antibody pair in PBS only storage buffer at a concentration of 1 mg/mL, ready for conjugation. Created using Proteintech's proprietary in-house recombinant technology. Recombinant production enables unrivalled batch-to-batch consistency, easy scale-up, and future security of supply.

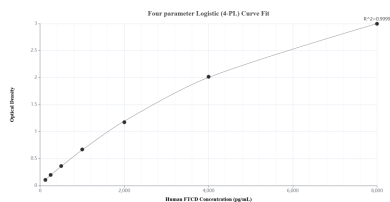
Matched antibody pairs are designed for use in a variety of assays and platforms that require matched antibody pairs.

Antibody use should be optimized for each application and assay.

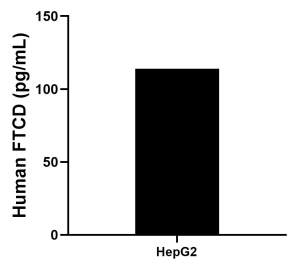
Storage

Storage:
Store at -80°C.
The product is shipped with ice packs. Upon receipt, store it immediately at -80°C
Storage buffer:
PBS only

Selected Validation Data



Sandwich ELISA standard curve of MP00636-3, Human FTCD Recombinant Matched Antibody Pair - PBS only. 83664-2-PBS was coated to a plate as the capture antibody and incubated with serial dilutions of standard Ag16646. 83664-4-PBS was HRP conjugated as the detection antibody. Range: 125-8000 pg/mL



The mean FTCD concentration was determined to be 114.0 pg/mL in HepG2 cell extract based on a 3.0 mg/mL extract load.