

CEA/CD66e Recombinant Matched Antibody Pair, PBS Only

Catalog Number: **MP00626-3**

Capture Antibody Information

Catalog Number:
83653-1-PBS

Host:
Rabbit

Isotype:
IgG

Purification Method:
Protein A purification

Clone ID:
240666B6

Reactivity:
human

GenBank:
NM_004363

Conjugate:
Unconjugated

Full name:
carcinoembryonic antigen-related cell adhesion molecule 5

Gene ID:
1048

Detection Antibody Information

Catalog Number:
83653-3-PBS

Host:
Rabbit

Isotype:
IgG

Purification Method:
Protein A purification

Clone ID:
240666C12

Reactivity:
human

GenBank:
NM_004363

Conjugate:
Unconjugated

Full name:
carcinoembryonic antigen-related cell adhesion molecule 5

Gene ID:
1048

Applications

Tested Applications:
Cytometric bead array, Sandwich ELISA

Range:
0.625-80 ng/mL (Cytometric Bead Array)
7.8-500 pg/mL (Sandwich ELISA)

Recommended Dilutions:
It is recommended that this reagent should be titrated in each testing system to obtain optimal results.

Product Information

MP00626-3 targets CEA/CD66e in immunoassays as a matched antibody pair. Validated in Cytometric bead array, Sandwich ELISA.

Capture antibody: CEA/CD66e Recombinant antibody, PBS Only (Capture) 83653-1-PBS (240666B6). 100 µg. Concentration 1 mg/mL.

Detection antibody: CEA/CD66e Recombinant antibody, PBS Only (Detector) 83653-3-PBS (240666C12). 100 µg. Concentration 1 mg/mL.

Unconjugated rabbit recombinant monoclonal antibody pair in PBS only storage buffer at a concentration of 1 mg/mL, ready for conjugation. Created using Proteintech's proprietary in-house recombinant technology. Recombinant production enables unrivalled batch-to-batch consistency, easy scale-up, and future security of supply.

Matched antibody pairs are designed for use in a variety of assays and platforms that require matched antibody pairs.

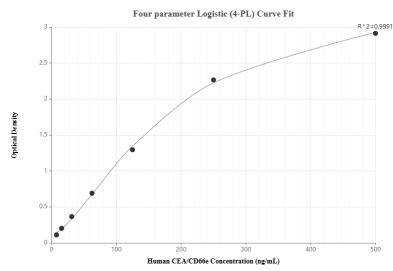
Antibody use should be optimized for each application and assay.

Storage

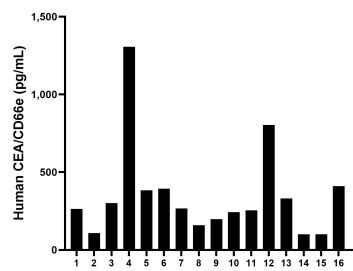
Storage:
Store at -80°C.
The product is shipped with ice packs. Upon receipt, store it immediately at -80°C

Storage buffer:
PBS only

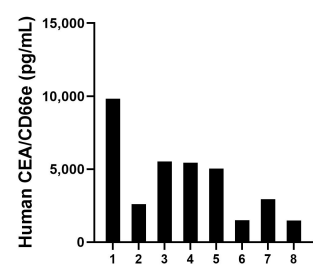
Selected Validation Data



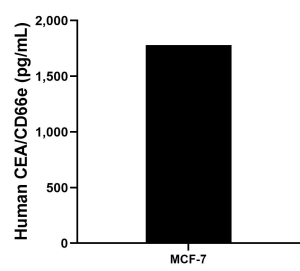
Sandwich ELISA standard curve of MP00626-3, Human CEA/CD66e Recombinant Matched Antibody Pair - PBS only. 83653-1-PBS was coated to a plate as the capture antibody and incubated with serial dilutions of standard Eg0449. 83653-3-PBS was HRP conjugated as the detection antibody. Range: 7.8-500 pg/mL



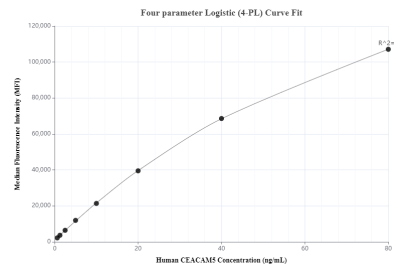
Serum of sixteen individual healthy human donors was measured. The human CEA/CD66e concentration of detected samples was determined to be 351.5 pg/mL with a range of 100.4 - 1,305.8 pg/mL



Saliva of eight individual healthy human donors was measured. The human CEA/CD66e concentration of detected samples was determined to be 4,297.5 pg/mL with a range of 1,476.6 - 9,827.4 pg/mL



The mean CEA/CD66e concentration was determined to be 1,780.9 pg/mL in MCF-7 cell extract based on a 1.5 mg/mL extract load.



Cytometric bead array standard curve of MP00626-3, CEA/CD66e Recombinant Matched Antibody Pair, PBS Only. Capture antibody: 83653-1-PBS. Detection antibody: 83653-3-PBS. Standard: Eg0449. Range: 0.625-80 ng/mL