

PD-L1/CD274 Recombinant Matched Antibody Pair, PBS Only

Catalog Number: MP00601-4

Capture Antibody Information

Catalog Number:
83600-7-PBS
Host:
Rabbit
Isotype:
IgG
Purification Method:
Protein A purification

Clone ID:
240721D4
Reactivity:
human
GenBank:
BC074984

Conjugate:
Unconjugated
Full name:
CD274 molecule
Gene ID:
29126

Detection Antibody Information

Catalog Number:
83600-6-PBS
Host:
Rabbit
Isotype:
IgG
Purification Method:
Protein A purification

Clone ID:
240721D2
Reactivity:
human
GenBank:
BC074984

Conjugate:
Unconjugated
Full name:
CD274 molecule
Gene ID:
29126

Applications

Tested Applications:
Sandwich ELISA

Range:
3.9-250 pg/mL (Sandwich ELISA)

Recommended Dilutions:
It is recommended that this reagent should be titrated in each testing system to obtain optimal results.

Product Information

MP00601-4 targets PD-L1/CD274 in immunoassays as a matched antibody pair. Validated in Sandwich ELISA.

Capture antibody: PD-L1/CD274 Recombinant antibody, PBS Only (Capture) 83600-7-PBS (240721D4). 100 µg. Concentration 1 mg/mL.

Detection antibody: PD-L1/CD274 Recombinant antibody, PBS Only (Capture/Detector) 83600-6-PBS (240721D2). 100 µg. Concentration 1 mg/mL.

Unconjugated rabbit recombinant monoclonal antibody pair in PBS only storage buffer at a concentration of 1 mg/mL, ready for conjugation. Created using Proteintech's proprietary in-house recombinant technology. Recombinant production enables unrivalled batch-to-batch consistency, easy scale-up, and future security of supply.

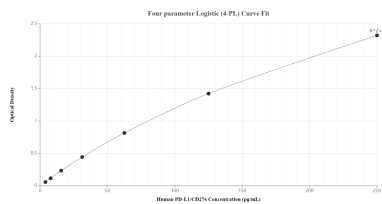
Matched antibody pairs are designed for use in a variety of assays and platforms that require matched antibody pairs.

Antibody use should be optimized for each application and assay.

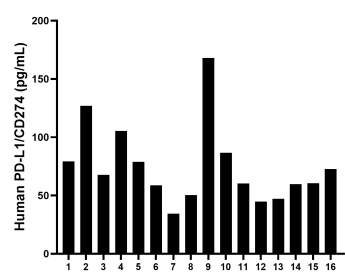
Storage

Storage:
Store at -80°C.
The product is shipped with ice packs. Upon receipt, store it immediately at -80°C
Storage buffer:
PBS only

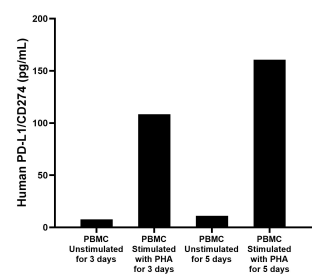
Selected Validation Data



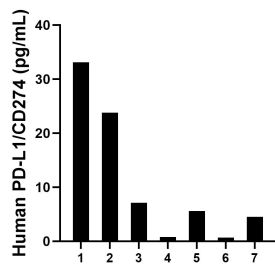
Sandwich ELISA standard curve of MP00601-4, Human PD-L1/CD274 Recombinant Matched Antibody Pair - PBS only. 83600-7-PBS was coated to a plate as the capture antibody and incubated with serial dilutions of standard Eg1114. 83600-6-PBS was HRP conjugated as the detection antibody. Range: 3.9-250 pg/mL



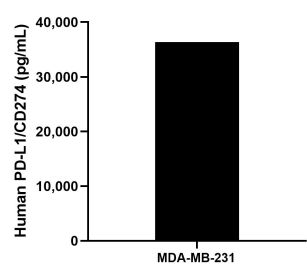
Serum of sixteen individual healthy human donors was measured. The PD-L1/CD274 concentration of detected samples was determined to be 75.1 pg/mL with a range of 34.4-168.1 pg/mL



Human peripheral blood mononuclear cells (PBMC) were cultured unstimulated or stimulated with 10 μ g/mL PHA for 3 days or 5 days. For the PBMC supernatant cultured for 3 days, the mean PD-L1/CD274 concentration was determined to be 7.7 pg/mL in unstimulated PBMC supernatant, 108.4 pg/mL in PHA stimulated PBMC supernatant. For the PBMC supernatant cultured for 5 days, the mean PD-L1/CD274 concentration was determined to be 11.0 pg/mL in unstimulated



Urine of seven individual healthy human donors was measured. The PD-L1/CD274 concentration of detected samples was determined to be 10.8 pg/mL with a range of 0.7 - 33.1 pg/mL



The mean PD-L1/CD274 concentration was determined to be 36,368.3 pg/mL in MDA-MB-231 cell extract based on a 2.3 mg/mL extract load.