

Dystrophin Recombinant Matched Antibody Pair, PBS Only

Catalog Number: MP00595-1

Capture Antibody Information

Catalog Number:
83609-3-PBS
Host:
Rabbit
Isotype:
IgG
Purification Method:
Protein A purification

Clone ID:
240567D4
Reactivity:
human
GenBank:
BC028720
Immunogen Catalog Number:
Ag3408

Conjugate:
Unconjugated
Full name:
dystrophin
Gene ID:
1756

Detection Antibody Information

Catalog Number:
83609-2-PBS
Host:
Rabbit
Isotype:
IgG
Purification Method:
Protein A purification

Clone ID:
240567C8
Reactivity:
human
GenBank:
BC028720
Immunogen Catalog Number:
Ag3408

Conjugate:
Unconjugated
Full name:
dystrophin
Gene ID:
1756

Applications

Tested Applications:
Cytometric bead array, Sandwich
ELISA

Range:
0.313-40 ng/mL (Cytometric Bead
Array)
9.77-625 pg/mL (Sandwich ELISA)

Recommended Dilutions:
It is recommended that this reagent
should be titrated in each testing
system to obtain optimal results.

Product Information

MP00595-1 targets Dystrophin in immunoassays as a matched antibody pair. Validated in Cytometric bead array, Sandwich ELISA.

Capture antibody: Dystrophin Recombinant antibody, PBS Only (Capture) 83609-3-PBS (240567D4). 100 µg. Concentration 1 mg/mL.

Detection antibody: Dystrophin Recombinant antibody, PBS Only (Detector) 83609-2-PBS (240567C8). 100 µg. Concentration 1 mg/mL.

Unconjugated rabbit recombinant monoclonal antibody pair in PBS only storage buffer at a concentration of 1 mg/mL, ready for conjugation. Created using Proteintech's proprietary in-house recombinant technology. Recombinant production enables unrivalled batch-to-batch consistency, easy scale-up, and future security of supply.

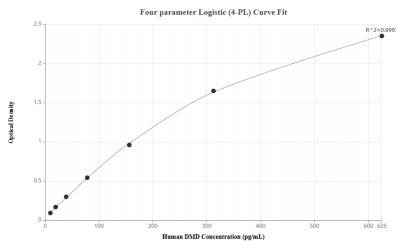
Matched antibody pairs are designed for use in a variety of assays and platforms that require matched antibody pairs.

Antibody use should be optimized for each application and assay.

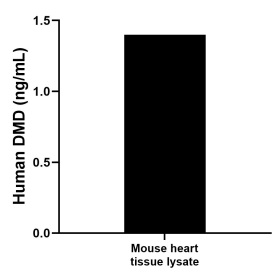
Storage

Storage:
Store at -80°C.
The product is shipped with ice packs. Upon receipt, store it immediately at -80°C
Storage buffer:
PBS only

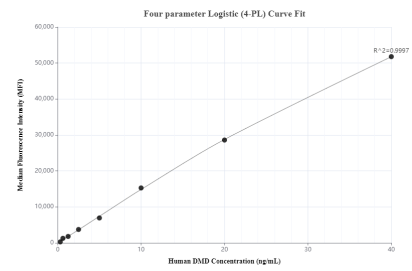
Selected Validation Data



Sandwich ELISA standard curve of MP00595-1, Human Dystrophin Recombinant Matched Antibody Pair - PBS only. 83609-3-PBS was coated to a plate as the capture antibody and incubated with serial dilutions of standard Ag3408. 83609-2-PBS was HRP conjugated as the detection antibody. Range: 9.77-625 pg/ml



Mouse heart tissue lyaste was measured. The human Dystrophin concentration of detected samples was determined to be 1.4 ng/mL (based on a 1.4 mg/mL extract load).



Cytometric bead array standard curve of MP00595-1, Dystrophin Recombinant Matched Antibody Pair, PBS Only. Capture antibody: 83609-3-PBS. Detection antibody: 83609-2-PBS. Standard: Ag3408. Range: 0.313-40 ng/mL.