

phospho(409/410)-TDP43

Recombinant Matched Antibody Pair, PBS Only

Catalog Number: **MP00589-2**

Capture Antibody Information

Catalog Number:
80007-1-PBS

Host:
Rabbit

Isotype:
IgG

Purification Method:
Protein A purification

Clone ID:
6M10

Reactivity:
human, mouse

GenBank:
NM_007375

Conjugate:
Unconjugated

Full name:
TAR DNA binding protein

Gene ID:
23435

Detection Antibody Information

Catalog Number:
80002-1-PBS

Host:
Rabbit

Isotype:
IgG

Purification Method:
Protein A purification

Clone ID:
16A22

Reactivity:
human, mouse, rat

GenBank:
BC001487

Immunogen Catalog Number:
Ag1231

Conjugate:
Unconjugated

Full name:
TAR DNA binding protein

Gene ID:
23435

Applications

Tested Applications:
Cytometric bead array

Range:
N/A (Cytometric Bead Array)

Recommended Dilutions:
It is recommended that this reagent should be titrated in each testing system to obtain optimal results.

Product Information

MP00589-2 targets phospho(409/410)-TDP43 in immunoassays as a matched antibody pair. Validated in Cytometric bead array.

Capture antibody: Phospho-TDP43 (Ser409/410) Recombinant antibody, PBS Only (Capture) 80007-1-PBS (6M10). 100 µg. Concentration 1 mg/ml.

Detection antibody: TDP-43 Recombinant antibody, PBS Only (Detector) 80002-1-PBS (16A22). 100 µg. Concentration 1 mg/ml.

Alternative phospho(409/410)-TDP43 matched antibody pairs: MP00589-1

Unconjugated rabbit recombinant monoclonal antibody pair in PBS only storage buffer at a concentration of 1 mg/ml, ready for conjugation. Created using Proteintech's proprietary in-house recombinant technology. Recombinant production enables unrivalled batch-to-batch consistency, easy scale-up, and future security of supply.

Matched antibody pairs are designed for use in a variety of assays and platforms that require matched antibody pairs.

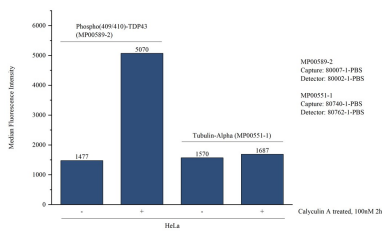
Antibody use should be optimized for each application and assay.

Storage

Storage:
Store at -80°C.
The product is shipped with ice packs. Upon receipt, store it immediately at -80°C

Storage buffer:
PBS only

Selected Validation Data



Cytometric bead array in cell lysate using MP00589-2, phospho(409/410)-TDP43 Recombinant Matched Antibody Pair, PBS Only. Capture antibody: 80007-1-PBS. Detection antibody: 80002-1-PBS. Cell lysate(30 μ g/well): Non-treated HeLa and Calyculin A treated HeLa cells were lysed in 8M urea buffer and diluted in assay buffer. Non-related target Tubulin-Alpha Recombinant Matched Antibody Pair (MP00551-1) was served as control.