

Mouse Keap1 Recombinant Matched Antibody Pair, PBS Only

Catalog Number: MP00586-4

Capture Antibody Information

Catalog Number:
83599-5-PBS
Host:
Rabbit
Isotype:
IgG
Purification Method:
Protein A purification

Clone ID:
240549A5
Reactivity:
mouse
GenBank:
NM_001110305
Immunogen Catalog Number:
Ag35035

Conjugate:
Unconjugated
Full name:
kelch-like ECH-associated protein 1
Gene ID:
50868

Detection Antibody Information

Catalog Number:
83599-4-PBS
Host:
Rabbit
Isotype:
IgG
Purification Method:
Protein A purification

Clone ID:
240549H4
Reactivity:
mouse
GenBank:
NM_001110305
Immunogen Catalog Number:
Ag35035

Conjugate:
Unconjugated
Full name:
kelch-like ECH-associated protein 1
Gene ID:
50868

Applications

Tested Applications:
Sandwich ELISA

Range:
0.625-40 ng/mL (Sandwich ELISA)

Recommended Dilutions:
It is recommended that this reagent should be titrated in each testing system to obtain optimal results.

Product Information

MP00586-4 targets Keap1 in immunoassays as a matched antibody pair. Validated in Sandwich ELISA.

Capture antibody: Mouse Keap1 Recombinant antibody, PBS Only (Capture) 83599-5-PBS (240549A5). 100 µg. Concentration 1 mg/mL.

Detection antibody: Mouse Keap1 Recombinant antibody, PBS Only (Detector) 83599-4-PBS (240549H4). 100 µg. Concentration 1 mg/mL.

Unconjugated rabbit recombinant monoclonal antibody pair in PBS only storage buffer at a concentration of 1 mg/mL, ready for conjugation. Created using Proteintech's proprietary in-house recombinant technology. Recombinant production enables unrivalled batch-to-batch consistency, easy scale-up, and future security of supply.

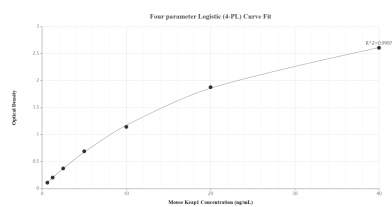
Matched antibody pairs are designed for use in a variety of assays and platforms that require matched antibody pairs.

Antibody use should be optimized for each application and assay.

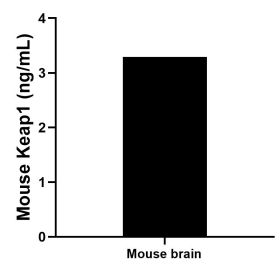
Storage

Storage:
Store at -80°C.
The product is shipped with ice packs. Upon receipt, store it immediately at -80°C
Storage buffer:
PBS only

Selected Validation Data



Sandwich ELISA standard curve of MP00586-4, Mouse Keap1 Recombinant Matched Antibody Pair - PBS only. 83599-5-PBS was coated to a plate as the capture antibody and incubated with serial dilutions of standard Ag35035. 83599-4-PBS was HRP conjugated as the detection antibody. Range: 0.625-40 ng/mL.



The mean Keap1 concentration was determined to be 3.29 ng/mL in mouse brain tissue extract based on a 1.60 mg/mL extract load.