

# HDAC1 Recombinant Matched Antibody Pair, PBS Only

Catalog Number: MP00577-1

## Capture Antibody Information

|   |  |  |
|---|--|--|
| <b>Catalog Number:</b><br>83624-2-PBS                 | <b>Clone ID:</b><br>240614A10              | <b>Conjugate:</b><br>Unconjugated          |
| <b>Host:</b><br>Rabbit                                | <b>Reactivity:</b><br>human                | <b>Full name:</b><br>histone deacetylase 1 |
| <b>Isotype:</b><br>IgG                                | <b>GenBank:</b><br>BC000301                | <b>Gene ID:</b><br>3065                    |
| <b>Purification Method:</b><br>Protein A purification | <b>Immunogen Catalog Number:</b><br>Ag0256 |  |

## Detection Antibody Information

|   |  |  |
|---|--|--|
| <b>Catalog Number:</b><br>83624-4-PBS                 | <b>Clone ID:</b><br>240614G4               | <b>Conjugate:</b><br>Unconjugated          |
| <b>Host:</b><br>Rabbit                                | <b>Reactivity:</b><br>human                | <b>Full name:</b><br>histone deacetylase 1 |
| <b>Isotype:</b><br>IgG                                | <b>GenBank:</b><br>BC000301                | <b>Gene ID:</b><br>3065                    |
| <b>Purification Method:</b><br>Protein A purification | <b>Immunogen Catalog Number:</b><br>Ag0256 |  |

## Applications

|  |  |   |
|--|--|---|
| <b>Tested Applications:</b><br>Cytometric bead array, Sandwich ELISA | <b>Range:</b><br>0.625-80 ng/mL (Cytometric Bead Array)<br>0.313-20 ng/mL (Sandwich ELISA) | <b>Recommended Dilutions:</b><br>It is recommended that this reagent should be titrated in each testing system to obtain optimal results. |
|--|--|---|

## Product Information

MP00577-1 targets HDAC1 in immunoassays as a matched antibody pair. Validated in Cytometric bead array, Sandwich ELISA.

Capture antibody: HDAC1 Recombinant antibody, PBS Only (Capture) 83624-2-PBS (240614A10). 100 µg. Concentration 1 mg/mL.

Detection antibody: HDAC1 Recombinant antibody, PBS Only (Detector) 83624-4-PBS (240614G4). 100 µg. Concentration 1 mg/mL.

Alternative HDAC1 matched antibody pairs: MP00577-2, MP00577-3

Unconjugated rabbit recombinant monoclonal antibody pair in PBS only storage buffer at a concentration of 1 mg/mL, ready for conjugation. Created using Proteintech's proprietary in-house recombinant technology. Recombinant production enables unrivalled batch-to-batch consistency, easy scale-up, and future security of supply.

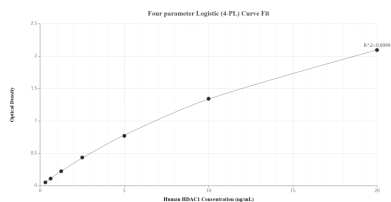
Matched antibody pairs are designed for use in a variety of assays and platforms that require matched antibody pairs.

Antibody use should be optimized for each application and assay.

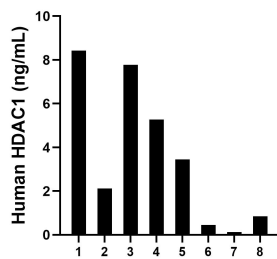
## Storage

**Storage:**  
Store at -80°C.  
The product is shipped with ice packs. Upon receipt, store it immediately at -80°C  
**Storage buffer:**  
PBS only

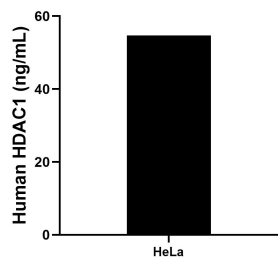
## Selected Validation Data



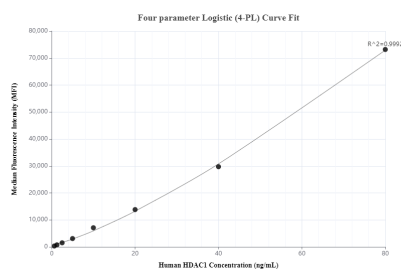
Sandwich ELISA standard curve of MP00577-1, Human HDAC1 Recombinant Matched Antibody Pair - PBS only. 83624-2-PBS was coated to a plate as the capture antibody and incubated with serial dilutions of standard Ag0256. 83624-4-PBS was HRP conjugated as the detection antibody. Range: 0.313-20 ng/mL



Serum of eight individual healthy human donors was measured. The HDAC1 concentration of detected samples was determined to be 3.56 ng/mL with a range of 0.13 - 8.43 ng/mL



The mean HDAC1 concentration was determined to be 54.72 ng/mL in HeLa cell extract based on a 4.30 mg/mL extract load.



Cytometric bead array standard curve of MP00577-1, HDAC1 Recombinant Matched Antibody Pair, PBS Only. Capture antibody: 83624-2-PBS. Detection antibody: 83624-4-PBS. Standard: Ag0256. Range: 0.625-80 ng/mL