

# TNF beta Recombinant Matched Antibody Pair, PBS Only

Catalog Number: MP00562-1

## Capture Antibody Information

**Catalog Number:**  
83573-3-PBS  
**Host:**  
Rabbit  
**Isotype:**  
IgG  
**Purification Method:**  
Protein A purification

**Clone ID:**  
240393C3  
**Reactivity:**  
human  
**GenBank:**  
BC034729

**Conjugate:**  
Unconjugated  
**Full name:**  
lymphotoxin alpha (TNF superfamily, member 1)  
**Gene ID:**  
4049

## Detection Antibody Information

**Catalog Number:**  
83573-2-PBS  
**Host:**  
Rabbit  
**Isotype:**  
IgG  
**Purification Method:**  
Protein A purification

**Clone ID:**  
240393D4  
**Reactivity:**  
human  
**GenBank:**  
BC034729

**Conjugate:**  
Unconjugated  
**Full name:**  
lymphotoxin alpha (TNF superfamily, member 1)  
**Gene ID:**  
4049

## Applications

**Tested Applications:**  
Cytometric bead array, Sandwich ELISA

**Range:**  
0.313-40 ng/mL (Cytometric Bead Array)  
10.9-700 pg/mL (Sandwich ELISA)

**Recommended Dilutions:**  
It is recommended that this reagent should be titrated in each testing system to obtain optimal results.

## Product Information

MP00562-1 targets TNF beta in immunoassays as a matched antibody pair. Validated in Cytometric bead array, Sandwich ELISA.

Capture antibody: TNF beta Recombinant antibody, PBS Only (Capture) 83573-3-PBS (240393C3). 100 µg. Concentration 1 mg/mL.

Detection antibody: TNF beta Recombinant antibody, PBS Only (Detector) 83573-2-PBS (240393D4). 100 µg. Concentration 1 mg/mL.

Unconjugated rabbit recombinant monoclonal antibody pair in PBS only storage buffer at a concentration of 1 mg/mL, ready for conjugation. Created using Proteintech's proprietary in-house recombinant technology. Recombinant production enables unrivalled batch-to-batch consistency, easy scale-up, and future security of supply.

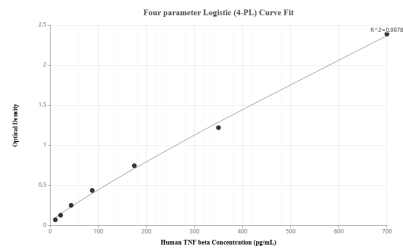
Matched antibody pairs are designed for use in a variety of assays and platforms that require matched antibody pairs.

Antibody use should be optimized for each application and assay.

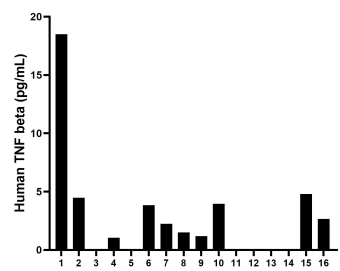
## Storage

**Storage:**  
Store at -80°C.  
**The product is shipped with ice packs. Upon receipt, store it immediately at -80°C**  
**Storage buffer:**  
PBS only

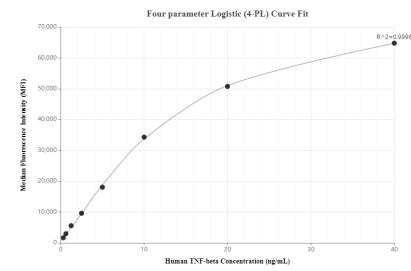
# Selected Validation Data



Sandwich ELISA standard curve of MP00562-1, Human TNF beta Recombinant Matched Antibody Pair - PBS only. 83573-3-PBS was coated to a plate as the capture antibody and incubated with serial dilutions of standard Eg0836. 83573-2-PBS was HRP conjugated as the detection antibody. Range: 10.9-700 pg/mL



Serum of sixteen individual healthy human donors was measured. The human TNF beta concentration of detected samples was determined to be 4 pg/mL with a range of 0.1 - 18.5 pg/mL.



Cytometric bead array standard curve of MP00562-1, TNF beta Recombinant Matched Antibody Pair, PBS Only. Capture antibody: 83573-3-PBS. Detection antibody: 83573-2-PBS. Standard: Eg0836. Range: 0.313-40 ng/mL