

TUBB3 Recombinant Matched Antibody Pair, PBS Only

Catalog Number: **MP00550-2**

Capture Antibody Information

Catalog Number:

80128-3-PBS

Host:

Rabbit

Isotype:

IgG

Purification Method:

Protein A purification

Clone ID:

250851G10

Reactivity:

human

GenBank:

NM_001197181

Conjugate:

Unconjugated

Full name:

tubulin, beta 3

Gene ID:

10381

Detection Antibody Information

Catalog Number:

80128-2-PBS

Host:

Rabbit

Isotype:

IgG

Purification Method:

Protein A purification

Clone ID:

250851E8

Reactivity:

human

GenBank:

NM_001197181

Conjugate:

Unconjugated

Full name:

tubulin, beta 3

Gene ID:

10381

Applications

Tested Applications:

Cytometric bead array

Range:

0.039-2.5 ng/mL (Cytometric Bead Array)

Recommended Dilutions:

It is recommended that this reagent should be titrated in each testing system to obtain optimal results.

Product Information

MP00550-2 targets TUBB3 in immunoassays as a matched antibody pair. Validated in Cytometric bead array.

Capture antibody: TUBB3-specific Recombinant antibody, PBS Only (Capture) 80128-3-PBS (250851G10). 100 µg. Concentration 1 mg/mL.

Detection antibody: TUBB3-specific Recombinant antibody, PBS Only (Detector) 80128-2-PBS (250851E8). 100 µg. Concentration 1 mg/mL.

Unconjugated rabbit recombinant monoclonal antibody pair in PBS only storage buffer at a concentration of 1 mg/mL, ready for conjugation. Created using Proteintech's proprietary in-house recombinant technology. Recombinant production enables unrivalled batch-to-batch consistency, easy scale-up, and future security of supply.

Matched antibody pairs are designed for use in a variety of assays and platforms that require matched antibody pairs.

Antibody use should be optimized for each application and assay.

Storage

Storage:

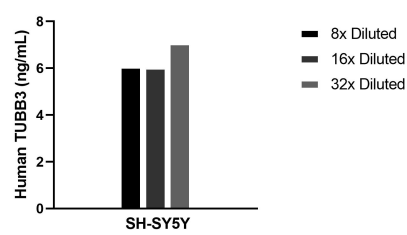
Store at -80°C.

The product is shipped with ice packs. Upon receipt, store it immediately at -80°C

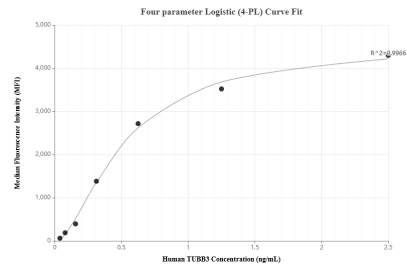
Storage buffer:

PBS only

Selected Validation Data



The mean TUBB3 concentration was determined to be 6.4 ng/mL in SH-SY5Y cell extract based on a 1.4 mg/mL extract load.



Cytometric bead array standard curve of MP00550-2, TUBB3 Recombinant Matched Antibody Pair, PBS Only. Capture antibody: 80128-3-PBS. Detection antibody: 80128-2-PBS. Standard: SY01676. Range: 0.039-2.5 ng/mL.