

Tubulin-beta Recombinant Matched Antibody Pair, PBS Only

Catalog Number:MP00550-1

Capture Antibody Information

Catalog Number:
80680-1-PBS
Host:
Rabbit
Isotype:
IgG
Purification Method:
Protein A purification

Clone ID:
2E8
Reactivity:
human
GenBank:
BC000748
Immunogen Catalog Number:
Ag0117

Conjugate:
Unconjugated
Full name:
tubulin, beta 3
Gene ID:
10381

Detection Antibody Information

Catalog Number:
80676-1-PBS
Host:
Rabbit
Isotype:
IgG
Purification Method:
Protein A purification

Clone ID:
8P15
Reactivity:
human
GenBank:
BC000748
Immunogen Catalog Number:
Ag0117

Conjugate:
Unconjugated
Full name:
tubulin, beta 3
Gene ID:
10381

Applications

Tested Applications:
Cytometric bead array

Range:
0.098-100 ng/mL (Cytometric Bead Array)

Recommended Dilutions:
It is recommended that this reagent should be titrated in each testing system to obtain optimal results.

Product Information

MP00550-1 targets Tubulin-beta in immunoassays as a matched antibody pair. Validated in Cytometric bead array.

Capture antibody: Tubulin-beta Recombinant antibody, PBS Only (Capture) 80680-1-PBS (2E8). 100 μ g. Concentration 1 mg/mL.

Detection antibody: Tubulin-beta Recombinant antibody, PBS Only (Detector) 80676-1-PBS (8P15). 100 μ g. Concentration 1 mg/mL.

Unconjugated rabbit recombinant monoclonal antibody pair in PBS only storage buffer at a concentration of 1 mg/mL, ready for conjugation. Created using Proteintech's proprietary in-house recombinant technology. Recombinant production enables unrivalled batch-to-batch consistency, easy scale-up, and future security of supply.

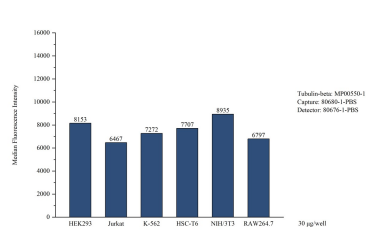
Matched antibody pairs are designed for use in a variety of assays and platforms that require matched antibody pairs.

Antibody use should be optimized for each application and assay.

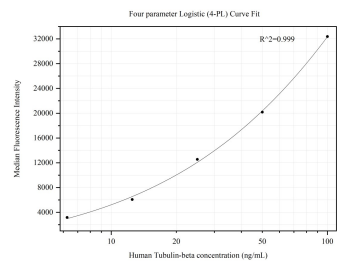
Storage

Storage:
Store at -80°C.
The product is shipped with ice packs. Upon receipt, store it immediately at -80°C
Storage buffer:
PBS only

Selected Validation Data



Sample test of MP00550-1, Tubulin-beta Recombinant Matched Antibody Pair, PBS Only. Capture antibody: 80680-1-PBS. Detection antibody: 80676-1-PBS. Cell lysate(30 µg/well): HEK293, Jurkat, K-562, HSC-T6, NIH/3T3, RAW264.7.



Cytometric bead array standard curve of MP00550-1, Tubulin-beta Recombinant Matched Antibody Pair, PBS Only. Capture antibody: 80680-1-PBS. Detection antibody: 80676-1-PBS. Standard:ag0117. Range: 0.098-100 ng/mL.