

Mouse Chemerin Recombinant Matched Antibody Pair, PBS Only

Catalog Number: **MP00537-3**

Capture Antibody Information

Catalog Number:
83550-1-PBS
Host:
Rabbit
Isotype:
IgG
Purification Method:
Protein A purification

Clone ID:
240355B3
Reactivity:
mouse
GenBank:
NM_001347168.1

Conjugate:
Unconjugated
Full name:
retinoic acid receptor responder
(tazarotene induced) 2
Gene ID:
71660

Detection Antibody Information

Catalog Number:
83550-2-PBS
Host:
Rabbit
Isotype:
IgG
Purification Method:
Protein A purification

Clone ID:
240355D4
Reactivity:
mouse
GenBank:
NM_001347168.1

Conjugate:
Unconjugated
Full name:
retinoic acid receptor responder
(tazarotene induced) 2
Gene ID:
71660

Applications

Tested Applications:
Sandwich ELISA

Range:
3.91-250 pg/mL (Sandwich ELISA)

Recommended Dilutions:
It is recommended that this reagent should be titrated in each testing system to obtain optimal results.

Product Information

MP00537-3 targets Chemerin in immunoassays as a matched antibody pair. Validated in Sandwich ELISA.

Capture antibody: Mouse Chemerin Recombinant antibody, PBS Only (Capture/Detector) 83550-1-PBS (240355B3).
100 µg. Concentration 1 mg/mL.

Detection antibody: Mouse Chemerin Recombinant antibody, PBS Only (Capture/Detector) 83550-2-PBS (240355D4).
100 µg. Concentration 1 mg/mL.

Unconjugated rabbit recombinant monoclonal antibody pair in PBS only storage buffer at a concentration of 1 mg/mL, ready for conjugation. Created using Proteintech's proprietary in-house recombinant technology. Recombinant production enables unrivalled batch-to-batch consistency, easy scale-up, and future security of supply.

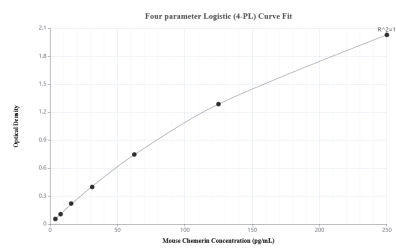
Matched antibody pairs are designed for use in a variety of assays and platforms that require matched antibody pairs.

Antibody use should be optimized for each application and assay.

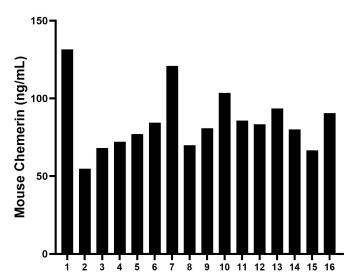
Storage

Storage:
Store at -80°C.
The product is shipped with ice packs. Upon receipt, store it immediately at -80°C
Storage buffer:
PBS only

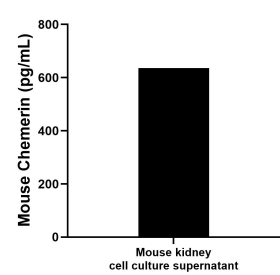
Selected Validation Data



Sandwich ELISA standard curve of MP00537-3, Mouse Chemerin Recombinant Matched Antibody Pair - PBS only. 83550-1-PBS was coated to a plate as the capture antibody and incubated with serial dilutions of standard Eg0875. 83550-2-PBS was HRP conjugated as the detection antibody. Range: 3.91-250 pg/mL



Serum of sixteen mice was measured. The mouse Chemerin concentration of detected samples was determined to be 85.21 ng/mL with a range of 54.83 - 131.59 ng/mL.



Mouse kidney tissue from one adult mouse (chopped in 1-2 mm pieces in 30 mL of medium) was cultured in RPMI supplemented with 10 % fetal calfserum and 50 μM β-mercaptoethanol. Aliquots of the cell culture supernates were removed, assayed for levels of mouse Chemerin, and measured 636.2 pg/mL.