

RPS11 Recombinant Matched Antibody Pair, PBS Only

Catalog Number: **MP00515-2**

Capture Antibody Information

Catalog Number: 83517-2-PBS	Clone ID: 240327F3	Conjugate: Unconjugated
Host: Rabbit	Reactivity: human	Full name: ribosomal protein S11
Isotype: IgG	GenBank: BC007945	Gene ID: 6205
Purification Method: Protein A purification	Immunogen Catalog Number: Ag34848	

Detection Antibody Information

Catalog Number: 83517-4-PBS	Clone ID: 240327G11	Conjugate: Unconjugated
Host: Rabbit	Reactivity: human	Full name: ribosomal protein S11
Isotype: IgG	GenBank: BC007945	Gene ID: 6205
Purification Method: Protein A purification	Immunogen Catalog Number: Ag34848	

Applications

Tested Applications: Sandwich ELISA	Range: 0.625-40 ng/mL (Sandwich ELISA)	Recommended Dilutions: It is recommended that this reagent should be titrated in each testing system to obtain optimal results.
--	---	--

Product Information

MP00515-2 targets RPS11 in immunoassays as a matched antibody pair. Validated in Sandwich ELISA.

Capture antibody: RPS11 Recombinant antibody, PBS Only (Capture) 83517-2-PBS (240327F3). 100 µg. Concentration 1 mg/mL.

Detection antibody: RPS11 Recombinant antibody, PBS Only (Detector) 83517-4-PBS (240327G11). 100 µg. Concentration 1 mg/mL.

Unconjugated rabbit recombinant monoclonal antibody pair in PBS only storage buffer at a concentration of 1 mg/mL, ready for conjugation. Created using Proteintech's proprietary in-house recombinant technology. Recombinant production enables unrivalled batch-to-batch consistency, easy scale-up, and future security of supply.

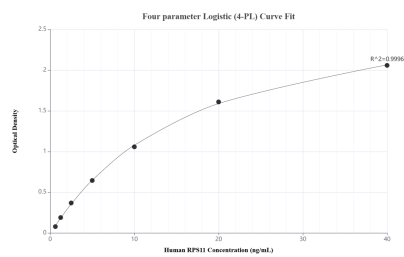
Matched antibody pairs are designed for use in a variety of assays and platforms that require matched antibody pairs.

Antibody use should be optimized for each application and assay.

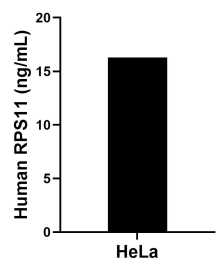
Storage

Storage:
Store at -80°C.
The product is shipped with ice packs. Upon receipt, store it immediately at -80°C
Storage buffer:
PBS only

Selected Validation Data



Sandwich ELISA standard curve of MP00515-2, Human RPS11 Recombinant Matched Antibody Pair - PBS only. 83517-2-PBS was coated to a plate as the capture antibody and incubated with serial dilutions of standard Ag34848. 83517-4-PBS was HRP conjugated as the detection antibody. Range: 0.625-40 ng/mL



The mean RPS11 concentration was determined to be 16.30 ng/mL in HeLa cell extract based on a 2.90 mg/mL extract load.