

# RPP30 Recombinant Matched Antibody Pair, PBS Only

Catalog Number: **MP00472-1**

## Capture Antibody Information

**Catalog Number:**  
83481-2-PBS  
**Host:**  
Rabbit  
**Isotype:**  
IgG  
**Purification Method:**  
Protein A purification

**Clone ID:**  
240468F5  
**Reactivity:**  
human  
**GenBank:**  
BC006991  
**Immunogen Catalog Number:**  
Ag8600

**Conjugate:**  
Unconjugated  
**Full name:**  
ribonuclease P/MRP 30kDa subunit  
**Gene ID:**  
10556

## Detection Antibody Information

**Catalog Number:**  
83481-5-PBS  
**Host:**  
Rabbit  
**Isotype:**  
IgG  
**Purification Method:**  
Protein A purification

**Clone ID:**  
240468E4  
**Reactivity:**  
human, mouse  
**GenBank:**  
BC006991  
**Immunogen Catalog Number:**  
Ag8600

**Conjugate:**  
Unconjugated  
**Full name:**  
ribonuclease P/MRP 30kDa subunit  
**Gene ID:**  
10556

## Applications

**Tested Applications:**  
Cytometric bead array, Sandwich ELISA

**Range:**  
0.78-100 ng/mL (Cytometric Bead Array)  
3.13-200 ng/mL (Sandwich ELISA)

**Recommended Dilutions:**  
It is recommended that this reagent should be titrated in each testing system to obtain optimal results.

## Product Information

MP00472-1 targets RPP30 in immunoassays as a matched antibody pair. Validated in Cytometric bead array, Sandwich ELISA.

Capture antibody: RPP30 Recombinant antibody, PBS Only (Capture/Detector) 83481-2-PBS (240468F5). 100 µg. Concentration 1 mg/mL.

Detection antibody: RPP30 Recombinant antibody, PBS Only (Detector) 83481-5-PBS (240468E4). 100 µg. Concentration 1 mg/mL.

Alternative RPP30 matched antibody pairs: MP00472-2, MP00472-3

Unconjugated rabbit recombinant monoclonal antibody pair in PBS only storage buffer at a concentration of 1 mg/mL, ready for conjugation. Created using Proteintech's proprietary in-house recombinant technology. Recombinant production enables unrivalled batch-to-batch consistency, easy scale-up, and future security of supply.

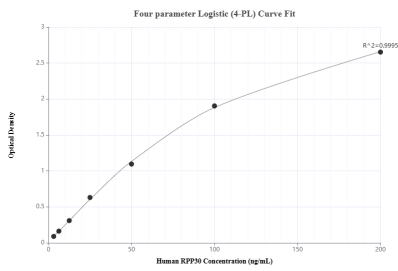
Matched antibody pairs are designed for use in a variety of assays and platforms that require matched antibody pairs.

Antibody use should be optimized for each application and assay.

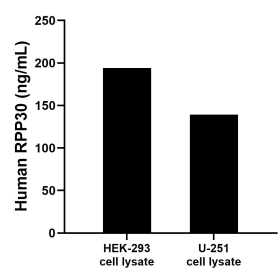
## Storage

**Storage:**  
Store at -80°C.  
**The product is shipped with ice packs. Upon receipt, store it immediately at -80°C**  
**Storage buffer:**  
PBS only

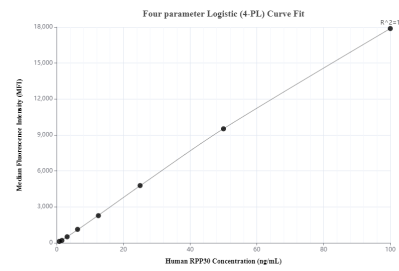
## Selected Validation Data



Sandwich ELISA standard curve of MP00472-1, Human RPP30 Recombinant Matched Antibody Pair - PBS only. 83481-2-PBS was coated to a plate as the capture antibody and incubated with serial dilutions of standard Ag8600. 83481-5-PBS was HRP conjugated as the detection antibody. Range: 3.13-200 ng/mL



HEK-293 and U-251 cell lysate were measured. The human RPP30 concentration of detected samples was determined to be 194.20 ng/mL (based on a 1.2 mg/mL extract load) in HEK-293 cell lysate and 139.41 ng/mL (based on a 3.3 mg/mL extract load) in U-251 cell lysate.



Cytometric bead array standard curve of MP00472-1, RPP30 Recombinant Matched Antibody Pair, PBS Only. Capture antibody: 83481-2-PBS. Detection antibody: 83481-5-PBS. Standard: Ag8600. Range: 0.78-100 ng/mL