

MAGEA3 Recombinant Matched Antibody Pair, PBS Only

Catalog Number:MP00467-4

Capture Antibody Information

Catalog Number:
83480-6-PBS
Host:
Rabbit
Isotype:
IgG
Purification Method:
Protein A purification

Clone ID:
240435F6
Reactivity:
human
GenBank:
BC000340
Immunogen Catalog Number:
Ag0265

Conjugate:
Unconjugated
Full name:
melanoma antigen family A, 3
Gene ID:
4102

Detection Antibody Information

Catalog Number:
83480-3-PBS
Host:
Rabbit
Isotype:
IgG
Purification Method:
Protein A purification

Clone ID:
240435F8
Reactivity:
human
GenBank:
BC000340
Immunogen Catalog Number:
Ag0265

Conjugate:
Unconjugated
Full name:
melanoma antigen family A, 3
Gene ID:
4102

Applications

Tested Applications:
Sandwich ELISA

Range:
39.1-2500 pg/mL (Sandwich ELISA)

Recommended Dilutions:
It is recommended that this reagent should be titrated in each testing system to obtain optimal results.

Product Information

MP00467-4 targets MAGEA3 in immunoassays as a matched antibody pair. Validated in Sandwich ELISA.

Capture antibody: MAGEA3 Recombinant antibody, PBS Only (Capture) 83480-6-PBS (240435F6). 100 µg. Concentration 1 mg/mL.

Detection antibody: MAGEA3 Recombinant antibody, PBS Only (Capture/Detector) 83480-3-PBS (240435F8). 100 µg. Concentration 1 mg/mL.

Alternative MAGEA3 matched antibody pairs: MP00467-1, MP00467-2, MP00467-3

Unconjugated rabbit recombinant monoclonal antibody pair in PBS only storage buffer at a concentration of 1 mg/mL, ready for conjugation. Created using Proteintech's proprietary in-house recombinant technology. Recombinant production enables unrivalled batch-to-batch consistency, easy scale-up, and future security of supply.

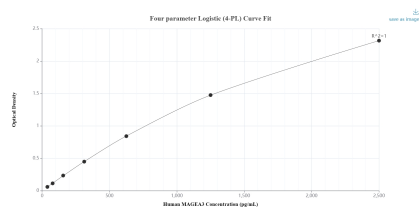
Matched antibody pairs are designed for use in a variety of assays and platforms that require matched antibody pairs.

Antibody use should be optimized for each application and assay.

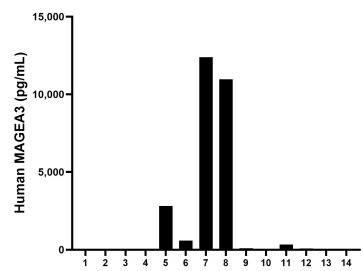
Storage

Storage:
Store at -80°C.
The product is shipped with ice packs. Upon receipt, store it immediately at -80°C
Storage buffer:
PBS only

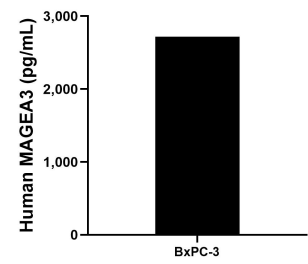
Selected Validation Data



Sandwich ELISA standard curve of MP00467-4, Human MAGEA3 Recombinant Matched Antibody Pair - PBS only. 83480-6-PBS was coated to a plate as the capture antibody and incubated with serial dilutions of standard Ag0265. 83480-3-PBS was HRP conjugated as the detection antibody. Range: 39.1-2500 pg/mL



Serum of fourteen individual healthy human donors was measured. The MAGEA3 concentration of detected samples was determined to be 1,950.7 pg/mL with a range of ND - 12,398.4 pg/mL



The mean MAGEA3 concentration was determined to be 2,719.3 pg/mL in BxPC-3 cell extract based on a 5.4 mg/mL extract load.