

HSPA2 Recombinant Matched Antibody Pair, PBS Only

Catalog Number: MP00465-1

Capture Antibody Information

Catalog Number: 83466-1-PBS	Clone ID: 240421A2	Conjugate: Unconjugated
Host: Rabbit	Reactivity: human, mouse	Full name: heat shock 70kDa protein 2
Isotype: IgG	GenBank: BC036107	Gene ID: 3306
Purification Method: Protein A purification	Immunogen Catalog Number: Ag3539	

Detection Antibody Information

Catalog Number: 83466-3-PBS	Clone ID: 240421A4	Conjugate: Unconjugated
Host: Rabbit	Reactivity: human	Full name: heat shock 70kDa protein 2
Isotype: IgG	GenBank: BC036107	Gene ID: 3306
Purification Method: Protein A purification	Immunogen Catalog Number: Ag3539	

Applications

Tested Applications: Cytometric bead array, Sandwich ELISA	Range: 0.625-80 ng/mL (Cytometric Bead Array) 78.1-5000 pg/mL (Sandwich ELISA)	Recommended Dilutions: It is recommended that this reagent should be titrated in each testing system to obtain optimal results.
--	---	---

Product Information

MP00465-1 targets HSPA2 in immunoassays as a matched antibody pair. Validated in Cytometric bead array, Sandwich ELISA.

Capture antibody: HSPA2 Recombinant antibody, PBS Only (Capture) 83466-1-PBS (240421A2). 100 µg. Concentration 1 mg/mL.

Detection antibody: HSPA2 Recombinant antibody, PBS Only (Capture/Detector) 83466-3-PBS (240421A4). 100 µg. Concentration 1 mg/mL.

Alternative HSPA2 matched antibody pairs: MP00465-2, MP00465-3

Unconjugated rabbit recombinant monoclonal antibody pair in PBS only storage buffer at a concentration of 1 mg/mL, ready for conjugation. Created using Proteintech's proprietary in-house recombinant technology. Recombinant production enables unrivalled batch-to-batch consistency, easy scale-up, and future security of supply.

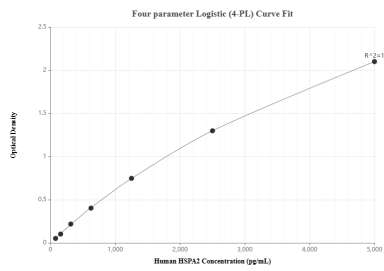
Matched antibody pairs are designed for use in a variety of assays and platforms that require matched antibody pairs.

Antibody use should be optimized for each application and assay.

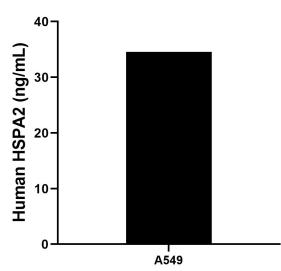
Storage

Storage:
Store at -80°C.
The product is shipped with ice packs. Upon receipt, store it immediately at -80°C
Storage buffer:
PBS only

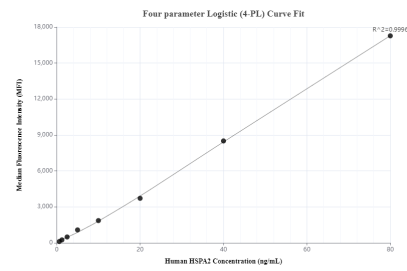
Selected Validation Data



Sandwich ELISA standard curve of MP00465-1, Human HSPA2 Recombinant Matched Antibody Pair - PBS only. 83466-1-PBS was coated to a plate as the capture antibody and incubated with serial dilutions of standard Ag3539. 83466-3-PBS was HRP conjugated as the detection antibody. Range: 78.1-5000 pg/mL



The mean HSPA2 concentration was determined to be 34.57 ng/mL in A549 cell extract based on a 2.5 mg/mL extract load.



Cytometric bead array standard curve of MP00465-1, HSPA2 Recombinant Matched Antibody Pair, PBS Only. Capture antibody: 83466-1-PBS. Detection antibody: 83466-3-PBS. Standard: Ag3539. Range: 0.625-80 ng/mL