

# DFNA5/GSDME Recombinant Matched Antibody Pair, PBS Only

Catalog Number: **MP00455-2**

## Capture Antibody Information

Catalog Number:  
83454-1-PBS  
Host:  
Rabbit  
Isotype:  
IgG  
Purification Method:  
Protein A purification

Clone ID:  
240394B3  
Reactivity:  
human  
GenBank:  
BC019689  
Immunogen Catalog Number:  
Ag3746

Conjugate:  
Unconjugated  
Full name:  
deafness, autosomal dominant 5  
Gene ID:  
1687

## Detection Antibody Information

Catalog Number:  
83454-4-PBS  
Host:  
Rabbit  
Isotype:  
IgG  
Purification Method:  
Protein A purification

Clone ID:  
240394E11  
Reactivity:  
human  
GenBank:  
BC019689  
Immunogen Catalog Number:  
Ag3746

Conjugate:  
Unconjugated  
Full name:  
deafness, autosomal dominant 5  
Gene ID:  
1687

## Applications

Tested Applications:  
Cytometric bead array, Sandwich  
ELISA

Range:  
0.78-100 ng/mL (Cytometric Bead  
Array)  
1.88-120 ng/mL (Sandwich ELISA)

Recommended Dilutions:  
It is recommended that this reagent  
should be titrated in each testing  
system to obtain optimal results.

## Product Information

MP00455-2 targets DFNA5/GSDME in immunoassays as a matched antibody pair. Validated in Cytometric bead array, Sandwich ELISA.

Capture antibody: GSDME Recombinant antibody, PBS Only (Capture) 83454-1-PBS (240394B3). 100 µg. Concentration 1 mg/mL.

Detection antibody: GSDME Recombinant antibody, PBS Only (Detector) 83454-4-PBS (240394E11). 100 µg. Concentration 1 mg/mL.

Unconjugated rabbit recombinant monoclonal antibody pair in PBS only storage buffer at a concentration of 1 mg/mL, ready for conjugation. Created using Proteintech's proprietary in-house recombinant technology. Recombinant production enables unrivalled batch-to-batch consistency, easy scale-up, and future security of supply.

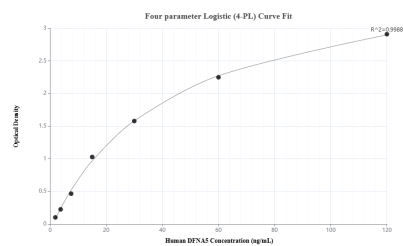
Matched antibody pairs are designed for use in a variety of assays and platforms that require matched antibody pairs.

Antibody use should be optimized for each application and assay.

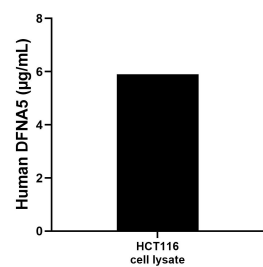
## Storage

Storage:  
Store at -80°C.  
The product is shipped with ice packs. Upon receipt, store it immediately at -80°C  
Storage buffer:  
PBS only

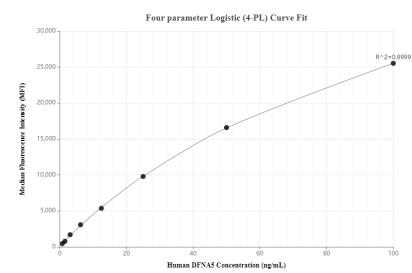
## Selected Validation Data



Sandwich ELISA standard curve of MP00455-2, Human DFNA5 Recombinant Matched Antibody Pair - PBS only. 83454-1-PBS was coated to a plate as the capture antibody and incubated with serial dilutions of standard Ag3746. 83454-4-PBS was HRP conjugated as the detection antibody. Range: 1.88-120 ng/mL



HCT116 cell lysate was measured. The human DFNA5 concentration of detected samples was determined to be 5.90 µg/mL (based on a 4.3 mg/mL extract load).



Cytometric bead array standard curve of MP00455-2, DFNA5 Recombinant Matched Antibody Pair, PBS Only. Capture antibody: 83454-1-PBS. Detection antibody: 83454-4-PBS. Standard: Ag3746. Range: 0.78-100 ng/mL