

# SLCO1A2 Recombinant Matched Antibody Pair, PBS Only

Catalog Number: **MP00452-3**

## Capture Antibody Information

**Catalog Number:**  
83446-2-PBS

**Host:**  
Rabbit

**Isotype:**  
IgG

**Purification Method:**  
Protein A purification

**Clone ID:**  
240484F11

**Reactivity:**  
Human

**GenBank:**  
NM\_021094

**Immunogen Catalog Number:**  
Ag34497

**Conjugate:**  
Unconjugated

**Full name:**  
solute carrier organic anion transporter family, member 1A2

**Gene ID:**  
6579

## Detection Antibody Information

**Catalog Number:**  
83446-1-PBS

**Host:**  
Rabbit

**Isotype:**  
IgG

**Purification Method:**  
Protein A purification

**Clone ID:**  
240484B11

**Reactivity:**  
Human

**GenBank:**  
NM\_021094

**Immunogen Catalog Number:**  
Ag34497

**Conjugate:**  
Unconjugated

**Full name:**  
solute carrier organic anion transporter family, member 1A2

**Gene ID:**  
6579

## Applications

**Tested Applications:**  
Cytometric bead array

**Range:**  
0.625-80 ng/mL (Cytometric Bead Array)

**Recommended Dilutions:**  
It is recommended that this reagent should be titrated in each testing system to obtain optimal results.

## Product Information

MP00452-3 targets SLCO1A2 in immunoassays as a matched antibody pair. Validated in Cytometric bead array.

Capture antibody: SLCO1A2 Recombinant antibody, PBS Only (Capture/Detector) 83446-2-PBS (240484F11). 100 µg. Concentration 1 mg/mL.

Detection antibody: SLCO1A2 Recombinant antibody, PBS Only (Capture/Detector) 83446-1-PBS (240484B11). 100 µg. Concentration 1 mg/mL.

Alternative SLCO1A2 matched antibody pairs: MP00452-1, MP00452-2

Unconjugated rabbit recombinant monoclonal antibody pair in PBS only storage buffer at a concentration of 1 mg/mL, ready for conjugation. Created using Proteintech's proprietary in-house recombinant technology. Recombinant production enables unrivalled batch-to-batch consistency, easy scale-up, and future security of supply.

Matched antibody pairs are designed for use in a variety of assays and platforms that require matched antibody pairs.

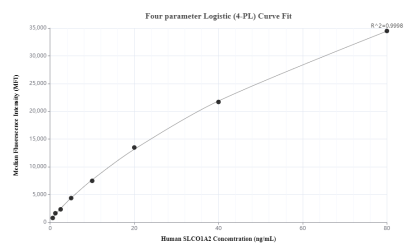
Antibody use should be optimized for each application and assay.

## Storage

**Storage:**  
Store at -80°C.

**Storage buffer:**  
PBS only

# Selected Validation Data



Cytometric bead array standard curve of MP00452-3, SLCO1A2 Recombinant Matched Antibody Pair, PBS Only. Capture antibody: 83446-2-PBS. Detection antibody: 83446-1-PBS. Standard: Ag34497. Range: 0.625-80 ng/mL.