

TREM2 Recombinant Matched Antibody Pair, PBS Only

Catalog Number: **MP00440-4**

Capture Antibody Information

Catalog Number:
83438-5-PBS
Host:
Rabbit
Isotype:
IgG
Purification Method:
Protein A purification

Clone ID:
240384G3
Reactivity:
human
GenBank:
BC032362

Conjugate:
Unconjugated
Full name:
triggering receptor expressed on myeloid cells 2
Gene ID:
54209

Detection Antibody Information

Catalog Number:
83438-7-PBS
Host:
Rabbit
Isotype:
IgG
Purification Method:
Protein A purification

Clone ID:
240384F6
Reactivity:
human
GenBank:
BC032362

Conjugate:
Unconjugated
Full name:
triggering receptor expressed on myeloid cells 2
Gene ID:
54209

Applications

Tested Applications:
Sandwich ELISA

Range:
23.4-1500 pg/mL (Sandwich ELISA)

Recommended Dilutions:
It is recommended that this reagent should be titrated in each testing system to obtain optimal results.

Product Information

MP00440-4 targets TREM2 in immunoassays as a matched antibody pair. Validated in Sandwich ELISA.

Capture antibody: TREM2 Recombinant antibody, PBS Only (Capture/Detector) 83438-5-PBS (240384G3). 100 µg. Concentration 1 mg/mL.

Detection antibody: TREM2 Recombinant antibody, PBS Only (Detector) 83438-7-PBS (240384F6). 100 µg. Concentration 1 mg/mL.

Unconjugated rabbit recombinant monoclonal antibody pair in PBS only storage buffer at a concentration of 1 mg/mL, ready for conjugation. Created using Proteintech's proprietary in-house recombinant technology. Recombinant production enables unrivalled batch-to-batch consistency, easy scale-up, and future security of supply.

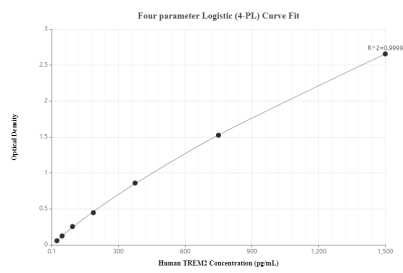
Matched antibody pairs are designed for use in a variety of assays and platforms that require matched antibody pairs.

Antibody use should be optimized for each application and assay.

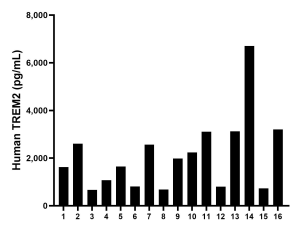
Storage

Storage:
Store at -80°C.
The product is shipped with ice packs. Upon receipt, store it immediately at -80°C
Storage buffer:
PBS only

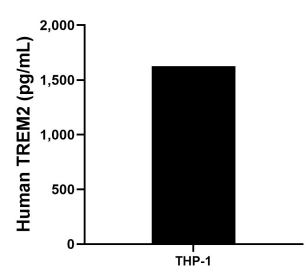
Selected Validation Data



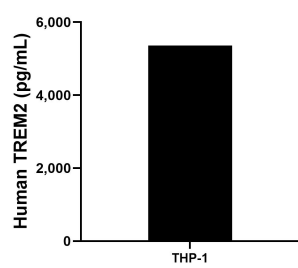
Sandwich ELISA standard curve of MP00440-4, Human TREM2 Monoclonal Matched Antibody Pair - PBS only. 83438-5-PBS was coated to a plate as the capture antibody and incubated with serial dilutions of standard Eg0747. 83438-7-PBS was HRP conjugated as the detection antibody. Range: 23.4-1500 pg/mL



Serum of sixteen individual healthy human donors were measured. The human TREM2 concentration of detected samples was determined to be 2,096.2 pg/mL with a range of 661.9-6,705.0 pg/mL



THP-1 cells (3×10^6 cells/mL) were cultured in RPMI with 10% fetal bovine serum, 50 μ M β - mercaptoethanol, 2 mM L-glutamine, 100 U/mL penicillin, and 100 μ g/mL streptomycin sulfate. Aliquots of the cell culture supernatants were removed and assayed for levels of human TREM2 and measured 1,626.6 pg/mL



The mean human TREM2 concentration was determined to be 5,362.2 pg/mL in THP-1 cell extract based on a 3.0 mg/mL extract load.