

# BRCA1 Recombinant Matched Antibody Pair, PBS Only

Catalog Number: **MP00425-2**

## Capture Antibody Information

<b>Catalog Number:</b> 83390-4-PBS	<b>Clone ID:</b> 240285A11	<b>Conjugate:</b> Unconjugated
<b>Host:</b> Rabbit	<b>Reactivity:</b> human	<b>Full name:</b> breast cancer 1, early onset
<b>Isotype:</b> IgG	<b>GenBank:</b> BC115037	<b>Gene ID:</b> 672
<b>Purification Method:</b> Protein A purification	<b>Immunogen Catalog Number:</b> Ag17946	

## Detection Antibody Information

<b>Catalog Number:</b> 83390-2-PBS	<b>Clone ID:</b> 240285H6	<b>Conjugate:</b> Unconjugated
<b>Host:</b> Rabbit	<b>Reactivity:</b> human	<b>Full name:</b> breast cancer 1, early onset
<b>Isotype:</b> IgG	<b>GenBank:</b> BC115037	<b>Gene ID:</b> 672
<b>Purification Method:</b> Protein A purification	<b>Immunogen Catalog Number:</b> Ag17946	

## Applications

<b>Tested Applications:</b> Cytometric bead array, Sandwich ELISA	<b>Range:</b> 0.313-40 ng/mL (Cytometric Bead Array) 0.156-10 ng/mL (Sandwich ELISA)	<b>Recommended Dilutions:</b> It is recommended that this reagent should be titrated in each testing system to obtain optimal results.
--	--	---

## Product Information

MP00425-2 targets BRCA1 in immunoassays as a matched antibody pair. Validated in Cytometric bead array, Sandwich ELISA.

Capture antibody: BRCA1 Recombinant antibody, PBS Only (Capture) 83390-4-PBS (240285A11). 100 µg. Concentration 1 mg/mL.

Detection antibody: BRCA1 Recombinant antibody, PBS Only (Capture/Detector) 83390-2-PBS (240285H6). 100 µg. Concentration 1 mg/mL.

Alternative BRCA1 matched antibody pairs: MP00425-1, MP00425-3

Unconjugated rabbit recombinant monoclonal antibody pair in PBS only storage buffer at a concentration of 1 mg/mL, ready for conjugation. Created using Proteintech's proprietary in-house recombinant technology. Recombinant production enables unrivalled batch-to-batch consistency, easy scale-up, and future security of supply.

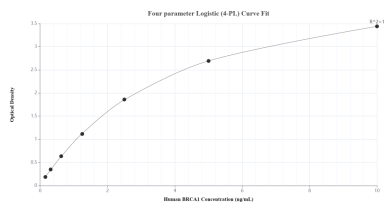
Matched antibody pairs are designed for use in a variety of assays and platforms that require matched antibody pairs.

Antibody use should be optimized for each application and assay.

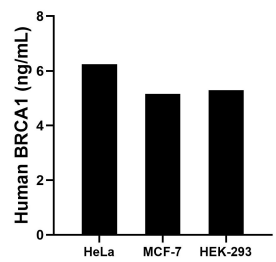
## Storage

**Storage:**  
Store at -80°C.  
**The product is shipped with ice packs. Upon receipt, store it immediately at -80°C**  
**Storage buffer:**  
PBS only

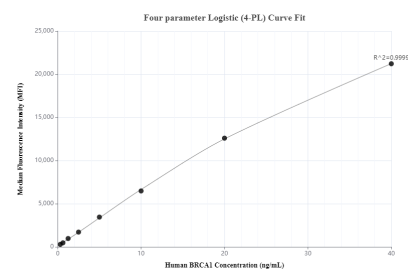
## Selected Validation Data



Sandwich ELISA standard curve of MP00425-2, Human BRCA1 Recombinant Matched Antibody Pair - PBS only. 83390-4-PBS was coated to a plate as the capture antibody and incubated with serial dilutions of standard Ag17946. 83390-2-PBS was HRP conjugated as the detection antibody. Range: 0.156-10 ng/mL.



The mean BRCA1 concentration was determined to be 6.24 ng/mL in HeLa cell extract based on a 1.20 mg/mL extract load, 5.16 ng/mL in MCF-7 cell extract based on a 1.20 mg/mL extract load and 5.29 ng/mL in HEK-293 cell extract based on a 1.20 mg/mL extract load.



Cytometric bead array standard curve of MP00425-2, BRCA1 Recombinant Matched Antibody Pair, PBS Only. Capture antibody: 83390-4-PBS. Detection antibody: 83390-2-PBS. Standard: Ag17946. Range: 0.313-40 ng/mL.