

For Research Use Only

Mouse IL-12/IL-23 p40 Recombinant Matched Antibody Pair, PBS Only



Catalog Number:MP00413-5

Capture Antibody Information

Catalog Number:
82865-13-PBS

Host:
Rabbit

Isotype:
IgG

Purification Method:
Protein A purification

Clone ID:
252385A4

Reactivity:
mouse

GenBank:
NM_001303244

Immunogen Catalog Number:
Eg0299

Conjugate:
Unconjugated

Full name:
interleukin 12b

Gene ID:
16160

Detection Antibody Information

Catalog Number:
82865-12-PBS

Host:
Rabbit

Isotype:
IgG

Purification Method:
Protein A purification

Clone ID:
252385G7

Reactivity:
mouse

GenBank:
NM_001303244

Immunogen Catalog Number:
Eg0299

Conjugate:
Unconjugated

Full name:
interleukin 12b

Gene ID:
16160

Applications

Tested Applications:
Sandwich ELISA

Range:
15.6-1000 pg/mL (Sandwich ELISA)

Recommended Dilutions:
It is recommended that this reagent should be titrated in each testing system to obtain optimal results.

Product Information

MP00413-5 targets IL-12/IL-23 p40 in immunoassays as a matched antibody pair. Validated in Sandwich ELISA.

Capture antibody: Mouse IL12b Recombinant monoclonal antibody, PBS Only (Capture) 82865-13-PBS (252385A4). 100 µg. Concentration 1 mg/mL.

Detection antibody: Mouse IL12b Recombinant monoclonal antibody, PBS Only (Detector) 82865-12-PBS (252385G7). 100 µg. Concentration 1 mg/mL.

Unconjugated rabbit recombinant monoclonal antibody pair in PBS only storage buffer at a concentration of 1 mg/mL, ready for conjugation. Created using Proteintech's proprietary in-house recombinant technology. Recombinant production enables unrivalled batch-to-batch consistency, easy scale-up, and future security of supply.

Matched antibody pairs are designed for use in a variety of assays and platforms that require matched antibody pairs.

Antibody use should be optimized for each application and assay.

Storage

Storage:
Store at -80°C.

The product is shipped with ice packs. Upon receipt, store it immediately at -80°C

Storage buffer:
PBS only

For technical support and original validation data for this product please contact:

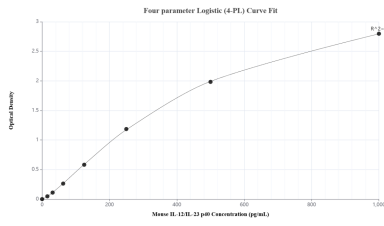
T: 4006900926

E: Proteintech-CN@ptglab.com

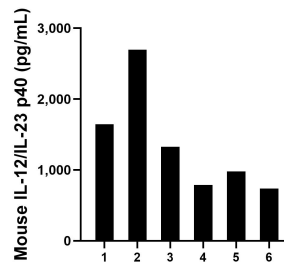
W: ptgcn.com

This product is exclusively available under Proteintech Group brand and is not available to purchase from any other manufacturer.

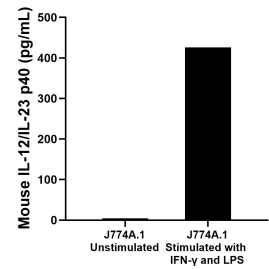
Selected Validation Data



Sandwich ELISA standard curve of MP00413-5, Mouse IL-12/IL-23 p40 Recombinant Matched Antibody Pair - PBS only. 82865-13-PBS was coated to a plate as the capture antibody and incubated with serial dilutions of standard Eg0299. 82865-12-PBS was HRP conjugated as the detection antibody. Range: 15.6-1000 pg/mL



Serum of six mice was measured. The IL-12/IL-23 p40 concentration of detected samples was determined to be 1,362.0 pg/mL with a range of 738.1-2,696.5 pg/mL



J774A.1 cells were cultured unstimulated or stimulated with 20ng/mL IFN- γ and 1 μ g/mL LPS for 1 day. The mean IL-12/IL-23 p40 concentration was determined to be 4.4 pg/mL in unstimulated supernatant, 426.3 pg/mL in stimulated supernatant.