

FGFR3 Recombinant Matched Antibody Pair, PBS Only

Catalog Number: **MP00407-4**

Capture Antibody Information

Catalog Number:

83701-3-PBS

Host:

Rabbit

Isotype:

IgG

Purification Method:

Protein A purification

Clone ID:

240758E10

Reactivity:

human

GenBank:

NM_001163213.1

Conjugate:

Unconjugated

Full name:

fibroblast growth factor receptor 3

Gene ID:

2261

Detection Antibody Information

Catalog Number:

83701-1-PBS

Host:

Rabbit

Isotype:

IgG

Purification Method:

Protein A purification

Clone ID:

240758B1

Reactivity:

human

GenBank:

NM_001163213.1

Conjugate:

Unconjugated

Full name:

fibroblast growth factor receptor 3

Gene ID:

2261

Applications

Tested Applications:

Cytometric bead array, Sandwich ELISA

Range:0.313-40 ng/mL (Cytometric Bead Array)
0.16-10 ng/mL (Sandwich ELISA)**Recommended Dilutions:**

It is recommended that this reagent should be titrated in each testing system to obtain optimal results.

Product Information

MP00407-4 targets FGFR3 in immunoassays as a matched antibody pair. Validated in Cytometric bead array, Sandwich ELISA.

Capture antibody: FGFR3 Recombinant antibody, PBS Only (Capture/Detector) 83701-3-PBS (240758E10). 100 µg. Concentration 1 mg/mL.

Detection antibody: FGFR3 Recombinant antibody, PBS Only (Detector) 83701-1-PBS (240758B1). 100 µg. Concentration 1 mg/mL.

Unconjugated rabbit recombinant monoclonal antibody pair in PBS only storage buffer at a concentration of 1 mg/mL, ready for conjugation. Created using Proteintech's proprietary in-house recombinant technology. Recombinant production enables unrivalled batch-to-batch consistency, easy scale-up, and future security of supply.

Matched antibody pairs are designed for use in a variety of assays and platforms that require matched antibody pairs.

Antibody use should be optimized for each application and assay.

Storage

Storage:

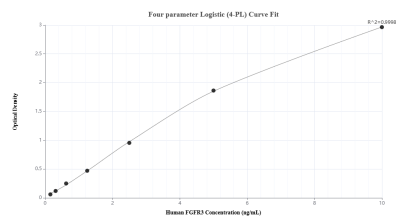
Store at -80°C.

The product is shipped with ice packs. Upon receipt, store it immediately at -80°C

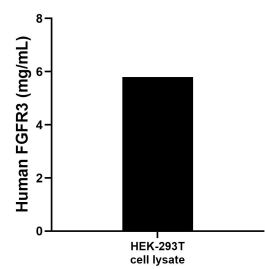
Storage buffer:

PBS only

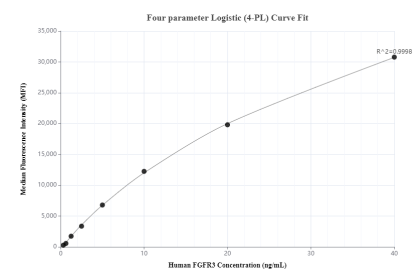
Selected Validation Data



Sandwich ELISA standard curve of MP00407-4, Human FGFR3 Recombinant Matched Antibody Pair - PBS only. 83701-3-PBS was coated to a plate as the capture antibody and incubated with serial dilutions of standard Eg1041. 83701-1-PBS was HRP conjugated as the detection antibody. Range: 0.16-10 ng/mL



HEK-293T cell lysate was measured. The human FGFR3 concentration was determined to be 5.8 mg/mL in HEK-293T cell lysate.



Cytometric bead array standard curve of MP00407-4, FGFR3 Recombinant Matched Antibody Pair, PBS Only. Capture antibody: 83701-3-PBS. Detection antibody: 83701-1-PBS. Standard: Eg1041. Range: 0.313-40 ng/mL