

# C13orf18 Recombinant Matched Antibody Pair, PBS Only

Catalog Number: MP00398-2

## Capture Antibody Information

Catalog Number:  
83411-2-PBS  
Host:  
Rabbit  
Isotype:  
IgG  
Purification Method:  
Protein A purification

Clone ID:  
240259G4  
Reactivity:  
human  
GenBank:  
BC032311  
Immunogen Catalog Number:  
Ag15474

Conjugate:  
Unconjugated  
Full name:  
chromosome 13 open reading frame 18  
Gene ID:  
80183

## Detection Antibody Information

Catalog Number:  
83411-4-PBS  
Host:  
Rabbit  
Isotype:  
IgG  
Purification Method:  
Protein A purification

Clone ID:  
240259C6  
Reactivity:  
human  
GenBank:  
BC032311  
Immunogen Catalog Number:  
Ag15474

Conjugate:  
Unconjugated  
Full name:  
chromosome 13 open reading frame 18  
Gene ID:  
80183

## Applications

Tested Applications:  
Cytometric bead array

Range:  
0.625-40 ng/mL (Cytometric Bead Array)

Recommended Dilutions:  
It is recommended that this reagent should be titrated in each testing system to obtain optimal results.

## Product Information

MP00398-2 targets C13orf18 in immunoassays as a matched antibody pair. Validated in Cytometric bead array.

Capture antibody: C13orf18 Recombinant antibody, PBS Only (Capture) 83411-2-PBS (240259G4). 100 µg. Concentration 1 mg/mL.

Detection antibody: C13orf18 Recombinant antibody, PBS Only (Detector) 83411-4-PBS (240259C6). 100 µg. Concentration 1 mg/mL.

Unconjugated rabbit recombinant monoclonal antibody pair in PBS only storage buffer at a concentration of 1 mg/mL, ready for conjugation. Created using Proteintech's proprietary in-house recombinant technology. Recombinant production enables unrivalled batch-to-batch consistency, easy scale-up, and future security of supply.

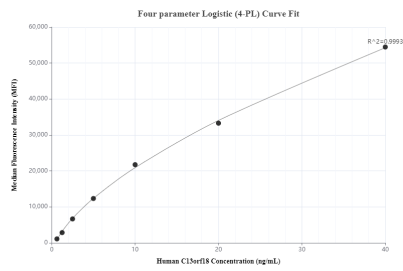
Matched antibody pairs are designed for use in a variety of assays and platforms that require matched antibody pairs.

Antibody use should be optimized for each application and assay.

## Storage

Storage:  
Store at -80°C.  
The product is shipped with ice packs. Upon receipt, store it immediately at -80°C  
Storage buffer:  
PBS only

# Selected Validation Data



Cytometric bead array standard curve of MP00398-2, C13orf18 Recombinant Matched Antibody Pair, PBS Only. Capture antibody: 83411-2-PBS. Detection antibody: 83411-4-PBS. Standard: Ag15474. Range: 0.625-40 ng/mL.