

Osteopontin Recombinant Matched Antibody Pair, PBS Only

Catalog Number: **MP00375-1**

Capture Antibody Information

Catalog Number:

83341-2-PBS

Host:

Rabbit

Isotype:

IgG

Purification Method:

Protein A purification

Clone ID:

240206B7

Reactivity:

human, mouse

GenBank:

BC007016

Conjugate:

Unconjugated

Full name:

secreted phosphoprotein 1

Gene ID:

6696

Detection Antibody Information

Catalog Number:

83341-1-PBS

Host:

Rabbit

Isotype:

IgG

Purification Method:

Protein A purification

Clone ID:

240206A2

Reactivity:

human, mouse

GenBank:

BC007016

Conjugate:

Unconjugated

Full name:

secreted phosphoprotein 1

Gene ID:

6696

Applications

Tested Applications:

Cytometric bead array, Sandwich ELISA

Range:0.313-40 ng/mL (Cytometric Bead Array)
0.313-20 ng/mL (Sandwich ELISA)**Recommended Dilutions:**

It is recommended that this reagent should be titrated in each testing system to obtain optimal results.

Product Information

MP00375-1 targets Osteopontin in immunoassays as a matched antibody pair. Validated in Cytometric bead array, Sandwich ELISA.

Capture antibody: Osteopontin Recombinant antibody, PBS Only (Capture) 83341-2-PBS (240206B7). 100 µg. Concentration 1 mg/mL.

Detection antibody: Osteopontin Recombinant antibody, PBS Only (Detector) 83341-1-PBS (240206A2). 100 µg. Concentration 1 mg/mL.

Unconjugated rabbit recombinant monoclonal antibody pair in PBS only storage buffer at a concentration of 1 mg/mL, ready for conjugation. Created using Proteintech's proprietary in-house recombinant technology. Recombinant production enables unrivalled batch-to-batch consistency, easy scale-up, and future security of supply.

Matched antibody pairs are designed for use in a variety of assays and platforms that require matched antibody pairs.

Antibody use should be optimized for each application and assay.

Storage

Storage:

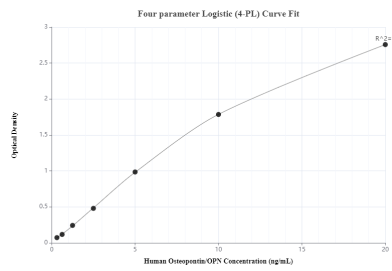
Store at -80°C.

The product is shipped with ice packs. Upon receipt, store it immediately at -80°C

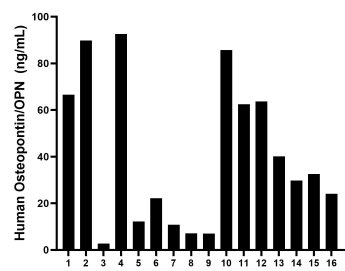
Storage buffer:

PBS only

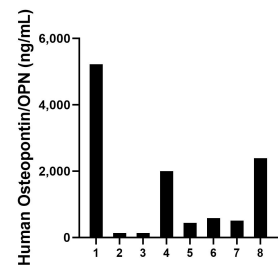
Selected Validation Data



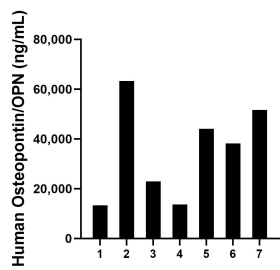
Sandwich ELISA standard curve of MP00375-1, Human Osteopontin Recombinant Matched Antibody Pair - PBS only. 83341-2-PBS was coated to a plate as the capture antibody and incubated with serial dilutions of standard Eg0754. 83341-1-PBS was HRP conjugated as the detection antibody. Range: 0.313-20 ng/mL



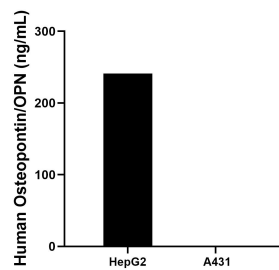
Plasma of sixteen individual healthy human donors was measured. The Osteopontin concentration of detected samples was determined to be 40.58 ng/mL with a range of 7.07 - 92.57 ng/mL



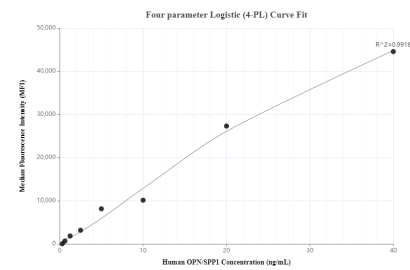
Urine of eight individual healthy human donors was measured. The Osteopontin concentration of detected samples was determined to be 1,426.23 ng/mL with a range of 136.64 - 5,219.95 ng/mL



Milk of seven individual healthy human donors was measured. The Osteopontin concentration of detected samples was determined to be 35,304.3 ng/mL with a range of 13,338.9 - 63,338.0 ng/mL



HepG2 (human hepatocellular carcinoma cells) were cultured in DMEM supplemented with 10% fetal bovine serum, 2.5 mM L-glutamine, 100 U/mL penicillin, and 100 μ g/mL streptomycin sulfate. An aliquot of the cell culture supernate was removed, assayed for human Osteopontin, and measured 240.9 ng/mL A431 were cultured in DMEM supplemented with 10% fetal bovine serum, 2.5 mM L-glutamine, 100 U/mL penicillin, and 100 μ g/mL streptomycin sulfate. An aliquot



Cytometric bead array standard curve of MP00375-1, Osteopontin Recombinant Matched Antibody Pair, PBS Only. Capture antibody: 83341-2-PBS. Detection antibody: 83341-1-PBS. Standard: Eg0754. Range: 0.313-40 ng/mL