

Cyclin E1 Recombinant Matched Antibody Pair, PBS Only

Catalog Number: MP00361-2

Capture Antibody Information

Catalog Number:
82700-6-PBS
Host:
Rabbit
Isotype:
IgG
Purification Method:
Protein A purification

Clone ID:
240136C10
Reactivity:
human
GenBank:
BC035498
Immunogen Catalog Number:
Ag2110

Conjugate:
Unconjugated
Full name:
cyclin E1
Gene ID:
898

Detection Antibody Information

Catalog Number:
82700-8-PBS
Host:
Rabbit
Isotype:
IgG
Purification Method:
Protein A purification

Clone ID:
240136G9
Reactivity:
human
GenBank:
BC035498
Immunogen Catalog Number:
Ag2110

Conjugate:
Unconjugated
Full name:
cyclin E1
Gene ID:
898

Applications

Tested Applications:
Cytometric bead array, Sandwich
ELISA

Range:
0.313-40 ng/mL (Cytometric Bead
Array)
0.313-40 ng/mL (Sandwich ELISA)

Recommended Dilutions:
It is recommended that this reagent
should be titrated in each testing
system to obtain optimal results.

Product Information

MP00361-2 targets Cyclin E1 in immunoassays as a matched antibody pair. Validated in Cytometric bead array, Sandwich ELISA.

Capture antibody: Cyclin E1 Recombinant antibody, PBS Only (Capture) 82700-6-PBS (240136C10). 100 µg. Concentration 1 mg/mL.

Detection antibody: Cyclin E1 Recombinant antibody, PBS Only (Detector) 82700-8-PBS (240136G9). 100 µg. Concentration 1 mg/mL.

Unconjugated rabbit recombinant monoclonal antibody pair in PBS only storage buffer at a concentration of 1 mg/mL, ready for conjugation. Created using Proteintech's proprietary in-house recombinant technology. Recombinant production enables unrivalled batch-to-batch consistency, easy scale-up, and future security of supply.

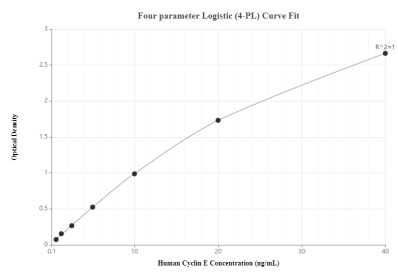
Matched antibody pairs are designed for use in a variety of assays and platforms that require matched antibody pairs.

Antibody use should be optimized for each application and assay.

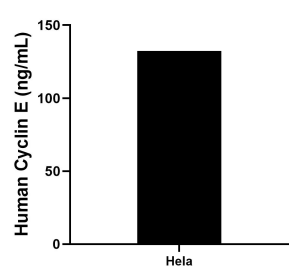
Storage

Storage:
Store at -80°C.
The product is shipped with ice packs. Upon receipt, store it immediately at -80°C
Storage buffer:
PBS only

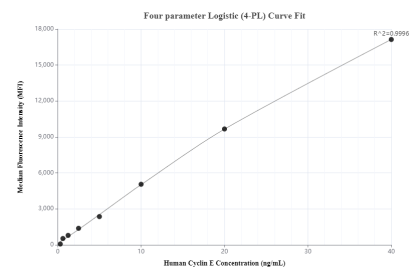
Selected Validation Data



Sandwich ELISA standard curve of MP00361-2, Human Cyclin E1 Monoclonal Matched Antibody Pair - PBS only. 82700-6-PBS was coated to a plate as the capture antibody and incubated with serial dilutions of standard Ag2110. 82700-8-PBS was HRP conjugated as the detection antibody. Range: 0.313-40 ng/mL



The mean human Cyclin E1 concentration was determined to be 132.4 ng/mL in Hela cell extract based on a 3.0 mg/mL extract load.



Cytometric bead array standard curve of MP00361-2, Cyclin E1 Recombinant Matched Antibody Pair, PBS Only. Capture antibody: 82700-6-PBS. Detection antibody: 82700-8-PBS. Standard: Ag2110. Range: 0.313-40 ng/mL