

IGFBP1 Recombinant Matched Antibody Pair, PBS Only

Catalog Number: **MP00355-3**

Capture Antibody Information

Catalog Number:
83347-2-PBS

Host:
Rabbit

Isotype:
IgG

Purification Method:
Protein A purification

Clone ID:
240263B5

Reactivity:
human

GenBank:
NM_000596.4

Conjugate:
Unconjugated

Full name:
IGF binding protein 1

Gene ID:
3484

Detection Antibody Information

Catalog Number:
83347-4-PBS

Host:
Rabbit

Isotype:
IgG

Purification Method:
Protein A purification

Clone ID:
240263H8

Reactivity:
human

GenBank:
NM_000596.4

Conjugate:
Unconjugated

Full name:
IGF binding protein 1

Gene ID:
3484

Applications

Tested Applications:

Cytometric bead array, Sandwich
ELISA

Range:

0.313-40 ng/mL (Cytometric Bead
Array)
62.5-4000 pg/mL (Sandwich ELISA)

Recommended Dilutions:

It is recommended that this reagent
should be titrated in each testing
system to obtain optimal results.

Product Information

MP00355-3 targets IGFBP1 in immunoassays as a matched antibody pair. Validated in Cytometric bead array, Sandwich ELISA.

Capture antibody: IGFBP1 Recombinant antibody, PBS Only (Capture) 83347-2-PBS (240263B5). 100 μ g.
Concentration 1 mg/mL.

Detection antibody: IGFBP1 Recombinant antibody, PBS Only (Detector) 83347-4-PBS (240263H8). 100 μ g.
Concentration 1 mg/mL.

Alternative IGFBP1 matched antibody pairs: MP00355-1, MP00355-2

Unconjugated rabbit recombinant monoclonal antibody pair in PBS only storage buffer at a concentration of 1 mg/mL, ready for conjugation. Created using Proteintech's proprietary in-house recombinant technology. Recombinant production enables unrivalled batch-to-batch consistency, easy scale-up, and future security of supply.

Matched antibody pairs are designed for use in a variety of assays and platforms that require matched antibody pairs.

Antibody use should be optimized for each application and assay.

Storage

Storage:

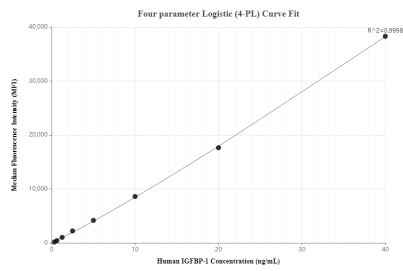
Store at -80°C.

The product is shipped with ice packs. Upon receipt, store it immediately at -80°C

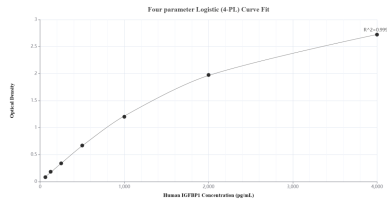
Storage buffer:

PBS only

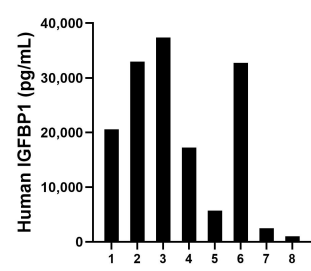
Selected Validation Data



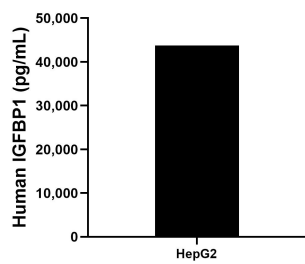
Cytometric bead array standard curve of MP00355-3, IGFBP1 Recombinant Matched Antibody Pair, PBS Only. Capture antibody: 83347-2-PBS. Detection antibody: 83347-4-PBS. Standard: Eg0951. Range: 0.313-40 ng/mL



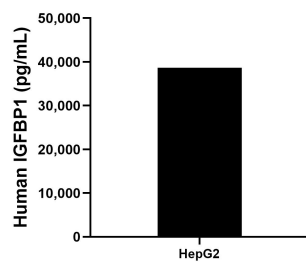
Sandwich ELISA standard curve of MP00355-3, Human IGFBP1 Recombinant Matched Antibody Pair - PBS only. 83347-2-PBS was coated to a plate as the capture antibody and incubated with serial dilutions of standard Eg0951. 83347-4-PBS was HRP conjugated as the detection antibody. Range: 62.5-4000 pg/mL



Serum of eight individual healthy human donors was measured. The IGFBP1 concentration of detected samples was determined to be 18,764.2 pg/mL with a range of 1,025.1 - 37,369.6 pg/mL



HepG2 cells were cultured in DMEM supplemented with 10% fetal bovine serum, 2.5 mM L-glutamine, 100 U/mL penicillin, and 100 µg/mL streptomycin sulfate. An aliquot of the cell culture supernate was removed, assayed for human IGFBP1, and measured 43,726.4 pg/mL



The mean IGFBP1 concentration was determined to be 38,698.4 pg/mL in HepG2 cell extract based on a 1.5 mg/mL extract load.