

# SNAI1 Recombinant Matched Antibody Pair, PBS Only

Catalog Number:MP00343-2

## Capture Antibody Information

<b>Catalog Number:</b> 81584-4-PBS	<b>Clone ID:</b> 240164C2	<b>Conjugate:</b> Unconjugated
<b>Host:</b> Rabbit	<b>Reactivity:</b> human, mouse, rat	<b>Full name:</b> snail homolog 1 (Drosophila)
<b>Isotype:</b> IgG	<b>GenBank:</b> BC012910	<b>Gene ID:</b> 6615
<b>Purification Method:</b> Protein A purification	<b>Immunogen Catalog Number:</b> Ag24248	

## Detection Antibody Information

<b>Catalog Number:</b> 81584-3-PBS	<b>Clone ID:</b> 240164D2	<b>Conjugate:</b> Unconjugated
<b>Host:</b> Rabbit	<b>Reactivity:</b> human	<b>Full name:</b> snail homolog 1 (Drosophila)
<b>Isotype:</b> IgG	<b>GenBank:</b> BC012910	<b>Gene ID:</b> 6615
<b>Purification Method:</b> Protein A purification	<b>Immunogen Catalog Number:</b> Ag24248	

## Applications

<b>Tested Applications:</b> Cytometric bead array, Sandwich ELISA	<b>Range:</b> 0.625-20 ng/mL (Cytometric Bead Array) 31.25-1000 pg/mL (Sandwich ELISA)	<b>Recommended Dilutions:</b> It is recommended that this reagent should be titrated in each testing system to obtain optimal results.
--	--	---

## Product Information

MP00343-2 targets SNAI1 in immunoassays as a matched antibody pair. Validated in Cytometric bead array, Sandwich ELISA.

Capture antibody: SNAI1 Recombinant antibody, PBS Only (Capture) 81584-4-PBS (240164C2). 100 µg. Concentration 1 mg/mL.

Detection antibody: SNAI1 Recombinant antibody, PBS Only (Detector) 81584-3-PBS (240164D2). 100 µg. Concentration 1 mg/mL.

Alternative SNAI1 matched antibody pairs: MP00343-1

Unconjugated rabbit recombinant monoclonal antibody pair in PBS only storage buffer at a concentration of 1 mg/mL, ready for conjugation. Created using Proteintech's proprietary in-house recombinant technology. Recombinant production enables unrivalled batch-to-batch consistency, easy scale-up, and future security of supply.

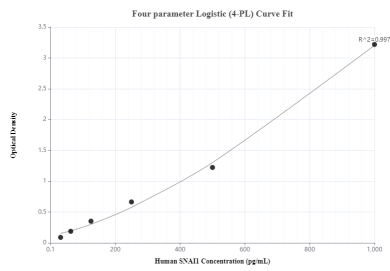
Matched antibody pairs are designed for use in a variety of assays and platforms that require matched antibody pairs.

Antibody use should be optimized for each application and assay.

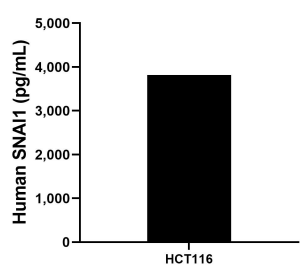
## Storage

**Storage:**  
Store at -80°C.  
**The product is shipped with ice packs. Upon receipt, store it immediately at -80°C**  
**Storage buffer:**  
PBS only

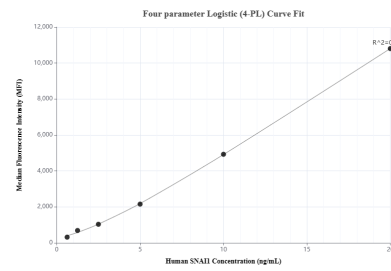
## Selected Validation Data



Sandwich ELISA standard curve of MP00343-2, Human SNAI1 Recombinant Matched Antibody Pair - PBS only. 81584-4-PBS was coated to a plate as the capture antibody and incubated with serial dilutions of standard Ag24248. 81584-3-PBS was HRP conjugated as the detection antibody. Range: 31.25-1000 pg/mL.



The mean SNAI1 concentration was determined to be 3,819.6 pg/mL in HCT116 cell extract based on a 3.0 mg/mL extract load.



Cytometric bead array standard curve of MP00343-2, SNAI1 Recombinant Matched Antibody Pair, PBS Only. Capture antibody: 81584-4-PBS. Detection antibody: 81584-3-PBS. Standard: Ag24248. Range: 0.625-20 ng/mL.