

MUC1/CA15-3 C-terminal Recombinant Matched Antibody Pair, PBS Only

Catalog Number: **MP00335-1**

Capture Antibody Information

Catalog Number:
83311-3-PBS
Host:
Rabbit
Isotype:
IgG
Purification Method:
Protein A purification

Clone ID:
240190D12
Reactivity:
human
GenBank:
BC120975
Immunogen Catalog Number:
Ag20366

Conjugate:
Unconjugated
Full name:
mucin 1, cell surface associated
Gene ID:
4582

Detection Antibody Information

Catalog Number:
83311-1-PBS
Host:
Rabbit
Isotype:
IgG
Purification Method:
Protein A purification

Clone ID:
240190A2
Reactivity:
human
GenBank:
BC120975
Immunogen Catalog Number:
Ag20366

Conjugate:
Unconjugated
Full name:
mucin 1, cell surface associated
Gene ID:
4582

Applications

Tested Applications:
Cytometric bead array, Sandwich
ELISA

Range:
0.78-100 ng/mL (Cytometric Bead
Array)
78.1-5000 pg/mL (Sandwich ELISA)

Recommended Dilutions:
It is recommended that this reagent
should be titrated in each testing
system to obtain optimal results.

Product Information

MP00335-1 targets MUC1/CA15-3 C-terminal in immunoassays as a matched antibody pair. Validated in Cytometric bead array, Sandwich ELISA.

Capture antibody: MUC1/CA15-3 C-terminal Recombinant antibody, PBS Only (Capture) 83311-3-PBS (240190D12).
100 µg. Concentration 1 mg/mL.

Detection antibody: MUC1/CA15-3 C-terminal Recombinant antibody, PBS Only (Detector) 83311-1-PBS (240190A2).
100 µg. Concentration 1 mg/mL.

Unconjugated rabbit recombinant monoclonal antibody pair in PBS only storage buffer at a concentration of 1 mg/mL, ready for conjugation. Created using Proteintech's proprietary in-house recombinant technology. Recombinant production enables unrivalled batch-to-batch consistency, easy scale-up, and future security of supply.

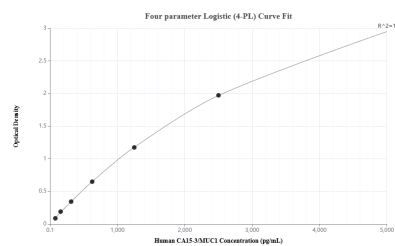
Matched antibody pairs are designed for use in a variety of assays and platforms that require matched antibody pairs.

Antibody use should be optimized for each application and assay.

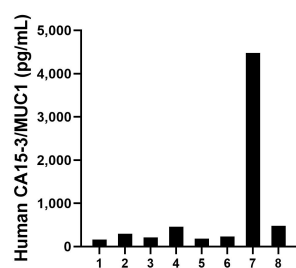
Storage

Storage:
Store at -80°C.
The product is shipped with ice packs. Upon receipt, store it immediately at -80°C
Storage buffer:
PBS only

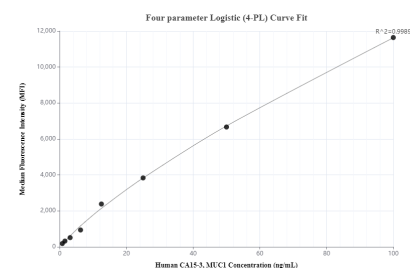
Selected Validation Data



Sandwich ELISA standard curve of MP00335-1, Human MUC1/CA15-3 C-terminal Recombinant Matched Antibody Pair - PBS only. 83311-3-PBS was coated to a plate as the capture antibody and incubated with serial dilutions of standard Ag20366. 83311-1-PBS was HRP conjugated as the detection antibody. Range: 78.1-5000 pg/mL



Serum of eight humans was measured. The human MUC1/CA15-3 C-terminal concentration of detected samples was determined to be 812.7 pg/mL with a range of 159.5 - 4,480.5 pg/mL



Cytometric bead array standard curve of MP00335-1, MUC1/CA15-3 C-terminal Recombinant Matched Antibody Pair, PBS Only. Capture antibody: 83311-3-PBS. Detection antibody: 83311-1-PBS. Standard: Ag20366. Range: 0.78-100 ng/mL