

SMARCA4 Recombinant Matched Antibody Pair, PBS Only

Catalog Number: MP00334-1

Capture Antibody Information

Catalog Number:
83310-1-PBS

Host:
Rabbit

Isotype:
IgG

Purification Method:
Protein A purification

Clone ID:
240172D5

Reactivity:
human

GenBank:
BC150298

Immunogen Catalog Number:
Ag16256

Conjugate:
Unconjugated

Full name:
SWI/SNF related, matrix associated, actin dependent regulator of chromatin, subfamily a, member 4

Gene ID:
6597

Detection Antibody Information

Catalog Number:
83310-2-PBS

Host:
Rabbit

Isotype:
IgG

Purification Method:
Protein A purification

Clone ID:
240172F4

Reactivity:
human, mouse, rat

GenBank:
BC150298

Immunogen Catalog Number:
Ag16256

Conjugate:
Unconjugated

Full name:
SWI/SNF related, matrix associated, actin dependent regulator of chromatin, subfamily a, member 4

Gene ID:
6597

Applications

Tested Applications:
Cytometric bead array, Sandwich ELISA

Range:
0.313-40 ng/mL (Cytometric Bead Array)
78.1-5000 pg/mL (Sandwich ELISA)

Recommended Dilutions:
It is recommended that this reagent should be titrated in each testing system to obtain optimal results.

Product Information

MP00334-1 targets SMARCA4 in immunoassays as a matched antibody pair. Validated in Cytometric bead array, Sandwich ELISA.

Capture antibody: SMARCA4 Recombinant antibody, PBS Only (Capture) 83310-1-PBS (240172D5). 100 µg. Concentration 1 mg/mL.

Detection antibody: SMARCA4 Recombinant antibody, PBS Only (Detector) 83310-2-PBS (240172F4). 100 µg. Concentration 1 mg/mL.

Alternative SMARCA4 matched antibody pairs: MP00334-2, MP00334-3

Unconjugated rabbit recombinant monoclonal antibody pair in PBS only storage buffer at a concentration of 1 mg/mL, ready for conjugation. Created using Proteintech's proprietary in-house recombinant technology. Recombinant production enables unrivalled batch-to-batch consistency, easy scale-up, and future security of supply.

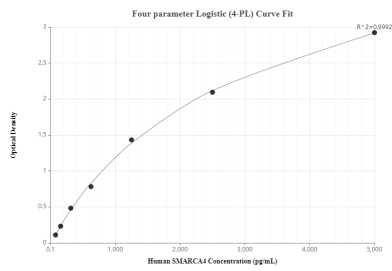
Matched antibody pairs are designed for use in a variety of assays and platforms that require matched antibody pairs.

Antibody use should be optimized for each application and assay.

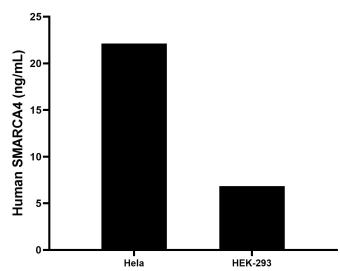
Storage

Storage:
Store at -80°C.
The product is shipped with ice packs. Upon receipt, store it immediately at -80°C
Storage buffer:
PBS only

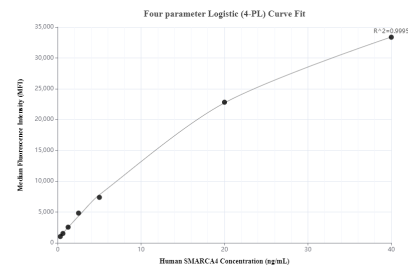
Selected Validation Data



Sandwich ELISA standard curve of MP00334-1, Human SMARCA4 Recombinant Matched Antibody Pair - PBS only. 83310-1-PBS was coated to a plate as the capture antibody and incubated with serial dilutions of standard Ag16256. 83310-2-PBS was HRP conjugated as the detection antibody. Range: 78.1-5000 pg/mL



The mean SMARCA4 concentration was determined to be 22.1 ng/mL in HeLa cell extract based on a 3.6 mg/mL extract load and 6.9 ng/mL in HEK-293 cell extract based on a 4.6 mg/mL extract load.



Cytometric bead array standard curve of MP00334-1, SMARCA4 Recombinant Matched Antibody Pair, PBS Only. Capture antibody: 83310-1-PBS. Detection antibody: 83310-2-PBS. Standard: Ag16256. Range: 0.313-40 ng/mL