

IL-1 beta Recombinant Matched Antibody Pair, PBS Only

Catalog Number: **MP00331-2**

Capture Antibody Information

Catalog Number: 82696-15-PBS	Clone ID: 240902D6	Conjugate: Unconjugated
Host: Rabbit	Reactivity: human	Full name: interleukin 1, beta
Isotype: IgG	GenBank: BC008678	Gene ID: 3553
Purification Method: Protein A purification	Immunogen Catalog Number: Eg0286	

Detection Antibody Information

Catalog Number: 82696-8-PBS	Clone ID: 2G9	Conjugate: Unconjugated
Host: Rabbit	Reactivity: human	Full name: interleukin 1, beta
Isotype: IgG	GenBank: BC008678	Gene ID: 3553
Purification Method: Protein A purification	Immunogen Catalog Number: Eg0286	

Applications

Tested Applications: Cytometric bead array, Sandwich ELISA	Range: 0.313-40 ng/mL (Cytometric Bead Array) 7.8-500 pg/mL (Sandwich ELISA)	Recommended Dilutions: It is recommended that this reagent should be titrated in each testing system to obtain optimal results.
--	---	---

Product Information

MP00331-2 targets IL-1 beta in immunoassays as a matched antibody pair. Validated in Cytometric bead array, Sandwich ELISA.

Capture antibody: IL-1 beta Recombinant monoclonal antibody, PBS Only (Capture) 82696-15-PBS (240902D6). 100 µg. Concentration 1 mg/mL.

Detection antibody: IL-1 beta Recombinant monoclonal antibody, PBS Only (Capture/Detector) 82696-8-PBS (2G9). 100 µg. Concentration 1 mg/mL.

Unconjugated rabbit recombinant monoclonal antibody pair in PBS only storage buffer at a concentration of 1 mg/mL, ready for conjugation. Created using Proteintech's proprietary in-house recombinant technology. Recombinant production enables unrivalled batch-to-batch consistency, easy scale-up, and future security of supply.

Matched antibody pairs are designed for use in a variety of assays and platforms that require matched antibody pairs.

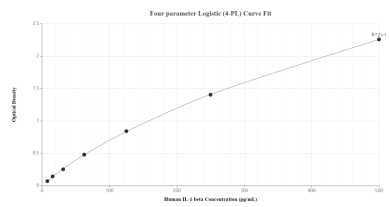
Antibody use should be optimized for each application and assay.

Storage

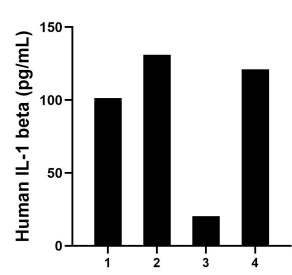
Storage:
Store at -80°C.
The product is shipped with ice packs. Upon receipt, store it immediately at -80°C

Storage buffer:
PBS only

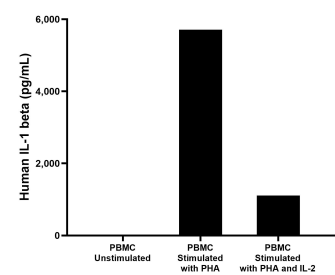
Selected Validation Data



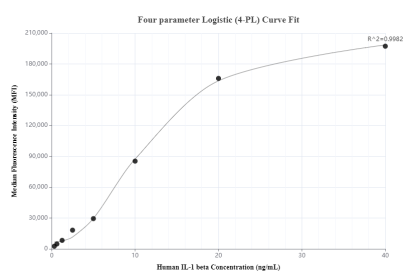
Sandwich ELISA standard curve of MP00331-2, Human IL-1 beta Recombinant Matched Antibody Pair - PBS only. 82696-15-PBS was coated to a plate as the capture antibody and incubated with serial dilutions of standard Eg0286. 82696-8-PBS was HRP conjugated as the detection antibody. Range: 7.8-500 pg/mL.



Serum of four individual healthy human donors was measured. The IL-1 beta concentration of detected samples was determined to be 93.4 pg/mL with a range of 20.3 - 131.0 pg/mL.



Human peripheral blood mononuclear cells (PBMC) were cultured unstimulated or stimulated with 10 μg/mL PHA or 10 μg/mL PHA and 10 ng/mL IL-2 for 1 day. The mean IL-1 beta concentration was not determined in unstimulated PBMC supernatant, 5,709.3 pg/mL in PHA stimulated PBMC supernatant and 1,110.8 pg/mL in PHA and IL-2 stimulated PBMC supernatant.



Cytometric bead array standard curve of MP00331-2, IL-1 beta Recombinant Matched Antibody Pair, PBS Only. Capture antibody: 82696-15-PBS. Detection antibody: 82696-8-PBS. Standard: Eg0286. Range: 0.313-40 ng/mL.