

MPO Recombinant Matched Antibody Pair, PBS Only

Catalog Number: **MP00321-2**

Capture Antibody Information

Catalog Number:
83282-4-PBS
Host:
Rabbit
Isotype:
IgG
Purification Method:
Protein A purification

Clone ID:
240229G6
Reactivity:
human
GenBank:
BC130476

Conjugate:
Unconjugated
Full name:
myeloperoxidase
Gene ID:
4353

Detection Antibody Information

Catalog Number:
83282-5-PBS
Host:
Rabbit
Isotype:
IgG
Purification Method:
Protein A purification

Clone ID:
240229A6
Reactivity:
human
GenBank:
BC130476

Conjugate:
Unconjugated
Full name:
myeloperoxidase
Gene ID:
4353

Applications

Tested Applications:
Sandwich ELISA

Range:
39-2500 pg/mL (Sandwich ELISA)

Recommended Dilutions:
It is recommended that this reagent should be titrated in each testing system to obtain optimal results.

Product Information

MP00321-2 targets MPO in immunoassays as a matched antibody pair. Validated in Sandwich ELISA.

Capture antibody: MPO Recombinant antibody, PBS Only (Capture) 83282-4-PBS (240229G6). 100 µg. Concentration 1 mg/mL.

Detection antibody: MPO Recombinant antibody, PBS Only (Detector) 83282-5-PBS (240229A6). 100 µg. Concentration 1 mg/mL.

Unconjugated rabbit recombinant monoclonal antibody pair in PBS only storage buffer at a concentration of 1 mg/mL, ready for conjugation. Created using Proteintech's proprietary in-house recombinant technology. Recombinant production enables unrivalled batch-to-batch consistency, easy scale-up, and future security of supply.

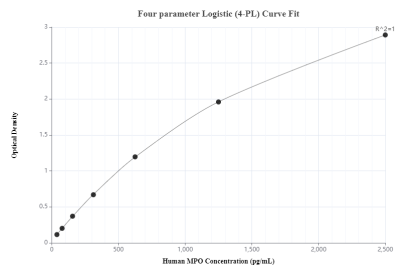
Matched antibody pairs are designed for use in a variety of assays and platforms that require matched antibody pairs.

Antibody use should be optimized for each application and assay.

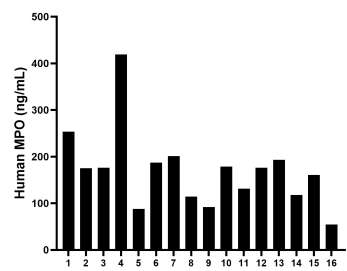
Storage

Storage:
Store at -80°C.
The product is shipped with ice packs. Upon receipt, store it immediately at -80°C
Storage buffer:
PBS only

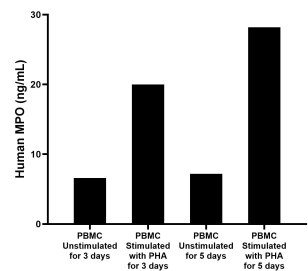
Selected Validation Data



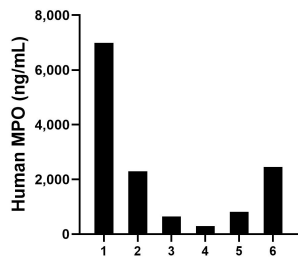
Sandwich ELISA standard curve of MP00321-2, Human MPO Recombinant Matched Antibody Pair - PBS only. 83282-4-PBS was coated to a plate as the capture antibody and incubated with serial dilutions of standard Eg0511. 83282-5-PBS was HRP conjugated as the detection antibody. Range: 39-2500 pg/mL



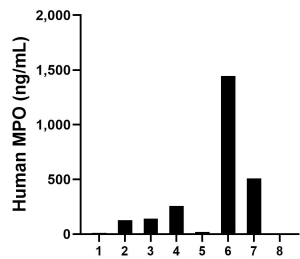
Serum of sixteen individual healthy human donors was measured. The MPO concentration of detected samples was determined to be 169.9 ng/mL with a range of 54.5 - 419.2 ng/mL



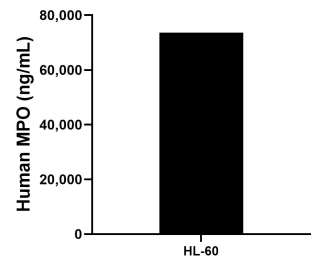
Human peripheral blood mononuclear cells (PBMC) were cultured unstimulated or stimulated with 10 μ g/mL PHA for 3 days or 5 days. For the PBMC supernatant cultured for 3 days, the mean MPO concentration was determined to be 6.6 ng/mL in unstimulated PBMC supernatant, 20.0 ng/mL in PHA stimulated PBMC supernatant. For the PBMC supernatant cultured for 5 days, the mean MPO concentration was determined to be 7.2 ng/mL in unstimulated PBMC supernatant,



Urine of six individual healthy human donors was measured. The MPO concentration of detected samples was determined to be 2,249.9 pg/mL with a range of 294.1 - 6,991.1 pg/mL



Saliva of eight individual healthy human donors was measured. The MPO concentration of detected samples was determined to be 314.7 ng/mL with a range of 6.3 - 1,446.1 ng/mL



The mean MPO concentration was determined to be 73,583.3 ng/mL in HL-60 cell extract based on a 4.3 mg/mL extract load.