

Mouse CD14 Recombinant Matched Antibody Pair, PBS Only

Catalog Number: **MP00313-4**

Capture Antibody Information

Catalog Number:
83297-7-PBS
Host:
Rabbit
Isotype:
IgG
Purification Method:
Protein A purification

Clone ID:
240225F2
Reactivity:
mouse
GenBank:
NM_009841.4

Conjugate:
Unconjugated
Full name:
CD14 antigen
Gene ID:
12475

Detection Antibody Information

Catalog Number:
83297-1-PBS
Host:
Rabbit
Isotype:
IgG
Purification Method:
Protein A purification

Clone ID:
240225A8
Reactivity:
mouse
GenBank:
NM_009841.4

Conjugate:
Unconjugated
Full name:
CD14 antigen
Gene ID:
12475

Applications

Tested Applications:
Sandwich ELISA

Range:
31.25-2000 pg/mL (Sandwich ELISA)

Recommended Dilutions:
It is recommended that this reagent should be titrated in each testing system to obtain optimal results.

Product Information

MP00313-4 targets CD14 in immunoassays as a matched antibody pair. Validated in Sandwich ELISA.

Capture antibody: Mouse CD14 Recombinant antibody, PBS Only (Capture) 83297-7-PBS (240225F2). 100 µg. Concentration 1 mg/mL.

Detection antibody: Mouse CD14 Recombinant antibody, PBS Only (Detector) 83297-1-PBS (240225A8). 100 µg. Concentration 1 mg/mL.

Alternative CD14 matched antibody pairs: MP00058-1, MP00058-2, MP00058-3, MP00058-4, MP00313-1, MP50282-1, MP50282-2

Unconjugated rabbit recombinant monoclonal antibody pair in PBS only storage buffer at a concentration of 1 mg/mL, ready for conjugation. Created using Proteintech's proprietary in-house recombinant technology. Recombinant production enables unrivalled batch-to-batch consistency, easy scale-up, and future security of supply.

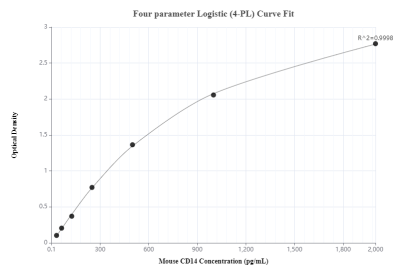
Matched antibody pairs are designed for use in a variety of assays and platforms that require matched antibody pairs.

Antibody use should be optimized for each application and assay.

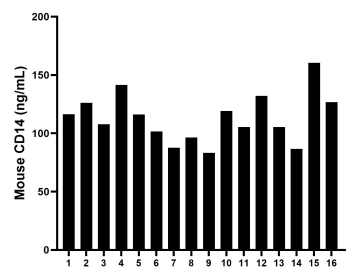
Storage

Storage:
Store at -80°C.
The product is shipped with ice packs. Upon receipt, store it immediately at -80°C
Storage buffer:
PBS only

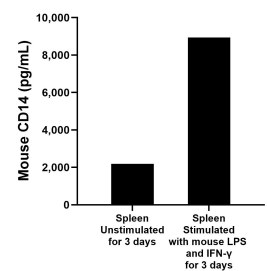
Selected Validation Data



Sandwich ELISA standard curve of MP00313-4, Mouse CD14 Monoclonal Matched Antibody Pair - PBS only. 83297-7-PBS was coated to a plate as the capture antibody and incubated with serial dilutions of standard Eg0847. 83297-1-PBS was HRP conjugated as the detection antibody. Range: 31.25-2000 pg/mL



Serum of sixteen mice was measured. The CD14 concentration of detected samples was determined to be 113.29 ng/mL with a range of 83.24-160.50 ng/mL



Mouse splenocytes (1×10^6 cells/mL) were cultured for 3 days in RPMI supplemented with 10% fetal calf serum, 100 ng/mL of recombinant mouse IFN- γ and 1μ g/mL of LPS. The mean CD-14 concentration was determined to be 2,187.4 pg/mL in unstimulated spleen, 8,939.2 pg/mL in IFN- γ and LPS stimulated spleen supernatant.