

# STX1B Recombinant Matched Antibody Pair, PBS Only

Catalog Number: MP00312-1

## Capture Antibody Information

**Catalog Number:**  
83298-1-PBS

**Host:**  
Rabbit

**Isotype:**  
IgG

**Purification Method:**  
Protein A purification

**Clone ID:**  
240156B9

**Reactivity:**  
human, mouse

**GenBank:**  
BC062298

**Immunogen Catalog Number:**  
Ag10275

**Conjugate:**  
Unconjugated

**Full name:**  
syntaxin 1B

**Gene ID:**  
112755

## Detection Antibody Information

**Catalog Number:**  
83298-4-PBS

**Host:**  
Rabbit

**Isotype:**  
IgG

**Purification Method:**  
Protein A purification

**Clone ID:**  
240156F6

**Reactivity:**  
human

**GenBank:**  
BC062298

**Immunogen Catalog Number:**  
Ag10275

**Conjugate:**  
Unconjugated

**Full name:**  
syntaxin 1B

**Gene ID:**  
112755

## Applications

**Tested Applications:**  
Cytometric bead array, Sandwich ELISA

**Range:**  
1.25-40 ng/mL (Cytometric Bead Array)  
31.25-2000 pg/mL (Sandwich ELISA)

**Recommended Dilutions:**  
It is recommended that this reagent should be titrated in each testing system to obtain optimal results.

## Product Information

MP00312-1 targets STX1B in immunoassays as a matched antibody pair. Validated in Cytometric bead array, Sandwich ELISA.

Capture antibody: STX1B Recombinant antibody, PBS Only (Capture) 83298-1-PBS (240156B9). 100 µg. Concentration 1 mg/mL.

Detection antibody: STX1B Recombinant antibody, PBS Only (Detector) 83298-4-PBS (240156F6). 100 µg. Concentration 1 mg/mL.

Alternative STX1B matched antibody pairs: MP00312-2, MP00312-3

Unconjugated rabbit recombinant monoclonal antibody pair in PBS only storage buffer at a concentration of 1 mg/mL, ready for conjugation. Created using Proteintech's proprietary in-house recombinant technology. Recombinant production enables unrivalled batch-to-batch consistency, easy scale-up, and future security of supply.

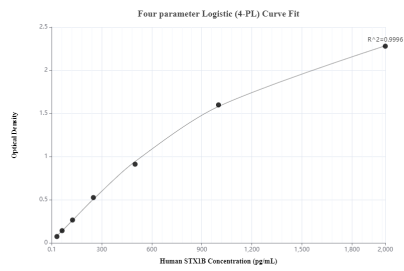
Matched antibody pairs are designed for use in a variety of assays and platforms that require matched antibody pairs.

Antibody use should be optimized for each application and assay.

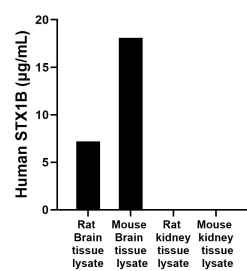
## Storage

**Storage:**  
Store at -80°C.  
The product is shipped with ice packs. Upon receipt, store it immediately at -80°C  
**Storage buffer:**  
PBS only

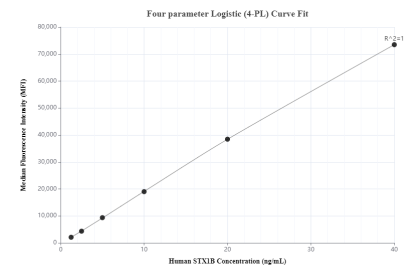
Selected Validation Data



Sandwich ELISA standard curve of MP00312-1, Human STX1B Monoclonal Matched Antibody Pair - PBS only. 83298-1-PBS was coated to a plate as the capture antibody and incubated with serial dilutions of standard Ag10275. 83298-4-PBS was HRP conjugated as the detection antibody. Range: 31.25-2000 pg/mL.



The mean human STX1B concentration was determined to be 7.2 µg/mL in rat Brain tissue lysate based on a 3.0 mg/mL extract load. The mean human STX1B concentration was determined to be 18.1 µg/mL in mouse Brain tissue lysate based on a 2 mg/mL extract load. The mean human STX1B concentration was determined to be 7.0 ng/mL in rat kidney tissue lysate based on a 3 mg/mL extract load. The mean human STX1B concentration was determined to be 15.1



Cytometric bead array standard curve of MP00312-1, STX1B Recombinant Matched Antibody Pair, PBS Only. Capture antibody: 83298-1-PBS. Detection antibody: 83298-4-PBS. Standard: Ag10275. Range: 1.25-40 ng/mL.