

For Research Use Only



Mouse Lipocalin-2/NGAL Recombinant Matched Antibody Pair, PBS Only

Catalog Number:MP00302-4

Capture Antibody Information

Catalog Number:
83102-1-PBS

Host:
Rabbit

Isotype:
IgG

Purification Method:
Protein A purification

Clone ID:
230372D6

Reactivity:
mouse

GenBank:
NM_008491.1

Conjugate:
Unconjugated

Full name:
lipocalin 2

Gene ID:
16819

Detection Antibody Information

Catalog Number:
83102-5-PBS

Host:
Rabbit

Isotype:
IgG

Purification Method:
Protein A purification

Clone ID:
230372C6

Reactivity:
mouse

GenBank:
NM_008491.1

Conjugate:
Unconjugated

Full name:
lipocalin 2

Gene ID:
16819

Applications

Tested Applications:
Sandwich ELISA

Range:
6.25-400 pg/mL (Sandwich ELISA)

Recommended Dilutions:
It is recommended that this reagent should be titrated in each testing system to obtain optimal results.

Product Information

MP00302-4 targets Lipocalin-2/NGAL in immunoassays as a matched antibody pair. Validated in Sandwich ELISA.

Capture antibody: Mouse Lipocalin-2/NGAL Recombinant antibody, PBS Only (Capture) 83102-1-PBS (230372D6).
100 µg. Concentration 1 mg/mL.

Detection antibody: Mouse Lipocalin-2/NGAL Recombinant antibody, PBS Only (Detector) 83102-5-PBS (230372C6).
100 µg. Concentration 1 mg/mL.

Unconjugated rabbit recombinant monoclonal antibody pair in PBS only storage buffer at a concentration of 1 mg/mL, ready for conjugation. Created using Proteintech's proprietary in-house recombinant technology. Recombinant production enables unrivalled batch-to-batch consistency, easy scale-up, and future security of supply.

Matched antibody pairs are designed for use in a variety of assays and platforms that require matched antibody pairs.

Antibody use should be optimized for each application and assay.

Storage

Storage:

Store at -80°C.

The product is shipped with ice packs. Upon receipt, store it immediately at -80°C

Storage buffer:

PBS only

For technical support and original validation data for this product please contact:

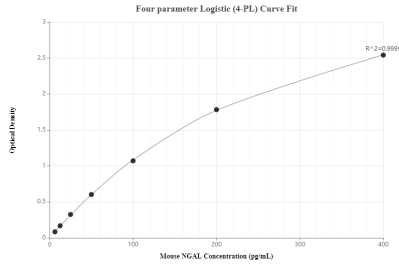
T: 4006900926

E: Proteintech-CN@ptglab.com

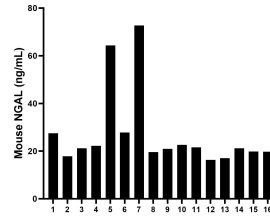
W: ptgcn.com

This product is exclusively available under Proteintech Group brand and is not available to purchase from any other manufacturer.

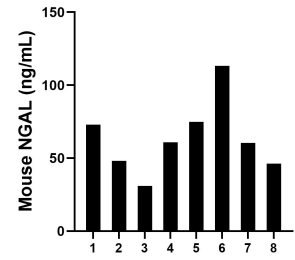
Selected Validation Data



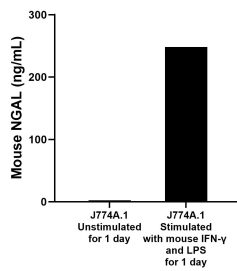
Sandwich ELISA standard curve of MP00302-4, Mouse NGAL Monoclonal Matched Antibody Pair - PBS only. 83102-1-PBS was coated to a plate as the capture antibody and incubated with serial dilutions of standard Eg0572. 83102-5-PBS was HRP conjugated as the detection antibody. Range: 6.25-400 pg/mL



Serum of sixteen mice were measured. The NGAL concentration of detected samples was determined to be 27.0 ng/mL with a range of 16.3 - 72.7 ng/mL



Urine of eight mice were measured. The NGAL concentration of detected samples was determined to be 63.5 ng/mL with a range of 31.0 - 113.3 ng/mL



Mouse reticulum cell sarcoma macrophage cells (0.5×10^6 cells/mL) were cultured for 1 day in DMEM supplemented with 10% fetal bovine serum containing 20 ng/mL of recombinant mouse IFN- γ and 1 μ g/mL of lipopolysaccharide. The mean NGAL concentration was determined to be 2.3 ng/mL in unstimulated J774A.1 supernatant, 248.3 ng/mL in stimulated J774A.1 supernatant.