

SPTA1 Recombinant Matched Antibody Pair, PBS Only

Catalog Number: **MP00280-3**

Capture Antibody Information

Catalog Number:
83133-4-PBS
Host:
Rabbit
Isotype:
IgG
Purification Method:
Protein A purification

Clone ID:
230507G1
Reactivity:
human
GenBank:
NM_003126

Conjugate:
Unconjugated
Full name:
spectrin, alpha, erythrocytic 1 (elliptocytosis 2)
Gene ID:
6708

Detection Antibody Information

Catalog Number:
83133-6-PBS
Host:
Rabbit
Isotype:
IgG
Purification Method:
Protein A purification

Clone ID:
230507B6
Reactivity:
human
GenBank:
NM_003126

Conjugate:
Unconjugated
Full name:
spectrin, alpha, erythrocytic 1 (elliptocytosis 2)
Gene ID:
6708

Applications

Tested Applications:
Sandwich ELISA

Range:
78.1-2500 pg/mL (Sandwich ELISA)

Recommended Dilutions:
It is recommended that this reagent should be titrated in each testing system to obtain optimal results.

Product Information

MP00280-3 targets SPTA1 in immunoassays as a matched antibody pair. Validated in Sandwich ELISA.

Capture antibody: SPTA1 Recombinant antibody, PBS Only (Capture/Detector) 83133-4-PBS (230507G1). 100 µg. Concentration 1 mg/mL.

Detection antibody: SPTA1 Recombinant antibody, PBS Only (Capture/Detector) 83133-6-PBS (230507B6). 100 µg. Concentration 1 mg/mL.

Unconjugated rabbit recombinant monoclonal antibody pair in PBS only storage buffer at a concentration of 1 mg/mL, ready for conjugation. Created using Proteintech's proprietary in-house recombinant technology. Recombinant production enables unrivalled batch-to-batch consistency, easy scale-up, and future security of supply.

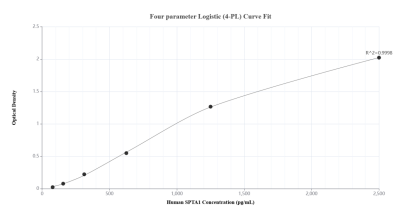
Matched antibody pairs are designed for use in a variety of assays and platforms that require matched antibody pairs.

Antibody use should be optimized for each application and assay.

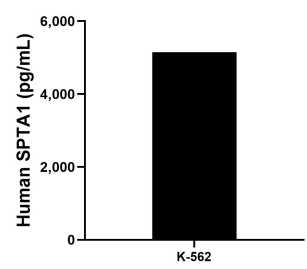
Storage

Storage:
Store at -80°C.
The product is shipped with ice packs. Upon receipt, store it immediately at -80°C
Storage buffer:
PBS only

Selected Validation Data



Sandwich ELISA standard curve of MP00280-3, Human SPTA1 Recombinant Matched Antibody Pair - PBS only. 83133-4-PBS was coated to a plate as the capture antibody and incubated with serial dilutions of standard SY01287. 83133-6-PBS was HRP conjugated as the detection antibody. Range: 78.1-2500 pg/mL.



The mean SPTA1 concentration was determined to be 5,150.0 pg/mL in K-562 cell extract based on a 2.1 mg/mL extract load.