

CLPX Recombinant Matched Antibody Pair, PBS Only

Catalog Number: **MP00277-3**

Capture Antibody Information

| | | |
|---|---|--|
| Catalog Number: 83097-2-PBS | Clone ID: 230346B8 | Conjugate: Unconjugated |
| Host: Rabbit | Reactivity: human | Full name: ClpX caseinolytic peptidase X homolog (E. coli) |
| Isotype: IgG | GenBank: NM_006660 | Gene ID: 10845 |
| Purification Method: Protein A purification | Immunogen Catalog Number: Ag34213 | |

Detection Antibody Information

| | | |
|---|---|--|
| Catalog Number: 83097-1-PBS | Clone ID: 230346H1 | Conjugate: Unconjugated |
| Host: Rabbit | Reactivity: human, mouse, rat | Full name: ClpX caseinolytic peptidase X homolog (E. coli) |
| Isotype: IgG | GenBank: NM_006660 | Gene ID: 10845 |
| Purification Method: Protein A purification | Immunogen Catalog Number: Ag34213 | |

Applications

| | | |
|---|---|---|
| Tested Applications: Sandwich ELISA | Range: 0.78-50 ng/mL (Sandwich ELISA) | Recommended Dilutions: It is recommended that this reagent should be titrated in each testing system to obtain optimal results. |
|---|---|---|

Product Information

MP00277-3 targets CLPX in immunoassays as a matched antibody pair. Validated in Sandwich ELISA.

Capture antibody: CLPX Recombinant antibody, PBS Only (Capture/Detector) 83097-2-PBS (230346B8). 100 µg. Concentration 1 mg/mL.

Detection antibody: CLPX Recombinant antibody, PBS Only (Capture/Detector) 83097-1-PBS (230346H1). 100 µg. Concentration 1 mg/mL.

Unconjugated rabbit recombinant monoclonal antibody pair in PBS only storage buffer at a concentration of 1 mg/mL, ready for conjugation. Created using Proteintech's proprietary in-house recombinant technology. Recombinant production enables unrivalled batch-to-batch consistency, easy scale-up, and future security of supply.

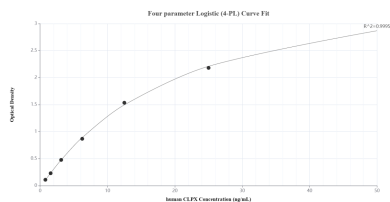
Matched antibody pairs are designed for use in a variety of assays and platforms that require matched antibody pairs.

Antibody use should be optimized for each application and assay.

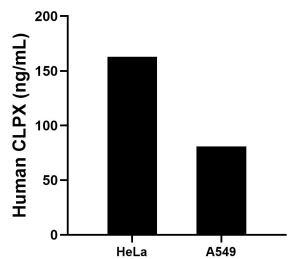
Storage

Storage:
Store at -80°C.
The product is shipped with ice packs. Upon receipt, store it immediately at -80°C
Storage buffer:
PBS only

Selected Validation Data



Sandwich ELISA standard curve of MP00277-3, Human CLPX Recombinant Matched Antibody Pair - PBS only. 83097-2-PBS was coated to a plate as the capture antibody and incubated with serial dilutions of standard Ag34213. 83097-1-PBS was HRP conjugated as the detection antibody. Range: 0.78-50 ng/mL



The mean CLPX concentration was determined to be 163.0 ng/mL in HeLa cell extract based on a 1.2 mg/mL extract load and 80.9 ng/mL in A549 cell extract based on a 1.0 mg/mL extract load.