

# SMAD4 Recombinant Matched Antibody Pair, PBS Only

Catalog Number: MP00267-4

## Capture Antibody Information

<b>Catalog Number:</b> 83169-5-PBS	<b>Clone ID:</b> 240026G9	<b>Conjugate:</b> Unconjugated
<b>Host:</b> Rabbit	<b>Reactivity:</b> human, mouse	<b>Full name:</b> SMAD family member 4
<b>Isotype:</b> IgG	<b>GenBank:</b> BC002379	<b>Gene ID:</b> 4089
<b>Purification Method:</b> Protein A purification	<b>Immunogen Catalog Number:</b> Ag0299	

## Detection Antibody Information

<b>Catalog Number:</b> 83169-6-PBS	<b>Clone ID:</b> 240026A4	<b>Conjugate:</b> Unconjugated
<b>Host:</b> Rabbit	<b>Reactivity:</b> human	<b>Full name:</b> SMAD family member 4
<b>Isotype:</b> IgG	<b>GenBank:</b> BC002379	<b>Gene ID:</b> 4089
<b>Purification Method:</b> Protein A purification	<b>Immunogen Catalog Number:</b> Ag0299	

## Applications

<b>Tested Applications:</b> Sandwich ELISA	<b>Range:</b> 39.1-2500 pg/mL (Sandwich ELISA)	<b>Recommended Dilutions:</b> It is recommended that this reagent should be titrated in each testing system to obtain optimal results.
---	---	---

## Product Information

MP00267-4 targets SMAD4 in immunoassays as a matched antibody pair. Validated in Sandwich ELISA.

Capture antibody: SMAD4 Recombinant antibody, PBS Only (Capture) 83169-5-PBS (240026G9). 100 µg. Concentration 1 mg/mL.

Detection antibody: SMAD4 Recombinant antibody, PBS Only (Detector) 83169-6-PBS (240026A4). 100 µg. Concentration 1 mg/mL.

Unconjugated rabbit recombinant monoclonal antibody pair in PBS only storage buffer at a concentration of 1 mg/mL, ready for conjugation. Created using Proteintech's proprietary in-house recombinant technology. Recombinant production enables unrivalled batch-to-batch consistency, easy scale-up, and future security of supply.

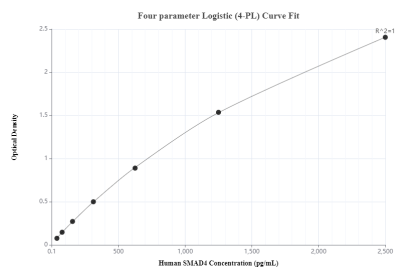
Matched antibody pairs are designed for use in a variety of assays and platforms that require matched antibody pairs.

Antibody use should be optimized for each application and assay.

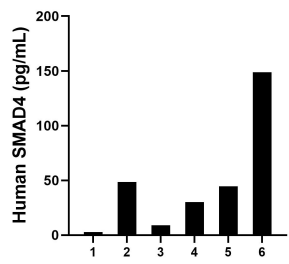
## Storage

**Storage:**  
Store at -80°C.  
**The product is shipped with ice packs. Upon receipt, store it immediately at -80°C**  
**Storage buffer:**  
PBS only

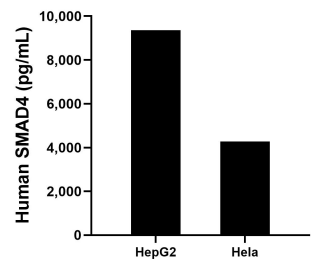
## Selected Validation Data



Sandwich ELISA standard curve of MP00267-4, Human SMAD4 Monoclonal Matched Antibody Pair - PBS only. 83169-5-PBS was coated to a plate as the capture antibody and incubated with serial dilutions of standard Ag0299. 83169-6-PBS was HRP conjugated as the detection antibody. Range: 39.1-2500 pg/mL



Serum of sixteen individual healthy human donors were measured. The human SMAD4 concentration of detected samples was determined to be 47.3 pg/mL with a range of ND - 148.8 pg/mL



The mean human SMAD4 concentration was determined to be 9,362.0 pg/mL in HepG2 cell extract based on a 6.0 mg/mL extract load and 4,272.2 pg/mL in HL-60 cell extract based on a 3 mg/mL extract load.