

Hemoglobin alpha Recombinant Matched Antibody Pair, PBS Only

Catalog Number: **MP00239-3**

Capture Antibody Information

Catalog Number: 83185-4-PBS	Clone ID: 240049H3	Conjugate: Unconjugated
Host: Rabbit	Reactivity: human	Full name: hemoglobin, alpha 1
Isotype: IgG	GenBank: BC050661	Gene ID: 3039
Purification Method: Protein A purification	Immunogen Catalog Number: Ag6040	

Detection Antibody Information

Catalog Number: 83185-3-PBS	Clone ID: 240049D2	Conjugate: Unconjugated
Host: Rabbit	Reactivity: human	Full name: hemoglobin, alpha 1
Isotype: IgG	GenBank: BC050661	Gene ID: 3039
Purification Method: Protein A purification	Immunogen Catalog Number: Ag6040	

Applications

Tested Applications: Sandwich ELISA	Range: 0.156-10 ng/mL (Sandwich ELISA)	Recommended Dilutions: It is recommended that this reagent should be titrated in each testing system to obtain optimal results.
---	--	---

Product Information

MP00239-3 targets Hemoglobin alpha in immunoassays as a matched antibody pair. Validated in Sandwich ELISA.

Capture antibody: Hemoglobin Alpha Recombinant antibody, PBS Only (Detector) 83185-4-PBS (240049H3). 100 µg. Concentration 1 mg/mL.

Detection antibody: Hemoglobin Alpha Recombinant antibody, PBS Only (Capture) 83185-3-PBS (240049D2). 100 µg. Concentration 1 mg/mL.

Unconjugated rabbit recombinant monoclonal antibody pair in PBS only storage buffer at a concentration of 1 mg/mL, ready for conjugation. Created using Proteintech's proprietary in-house recombinant technology. Recombinant production enables unrivalled batch-to-batch consistency, easy scale-up, and future security of supply.

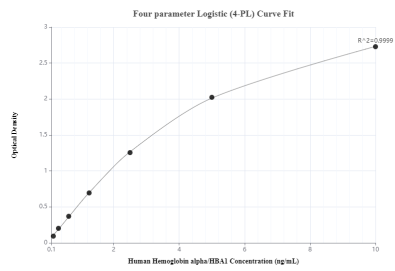
Matched antibody pairs are designed for use in a variety of assays and platforms that require matched antibody pairs.

Antibody use should be optimized for each application and assay.

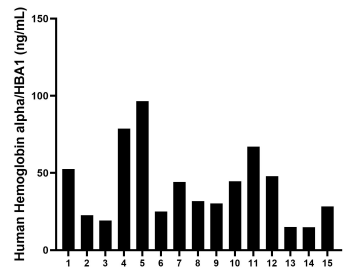
Storage

Storage:
Store at -80°C.
The product is shipped with ice packs. Upon receipt, store it immediately at -80°C
Storage buffer:
PBS only

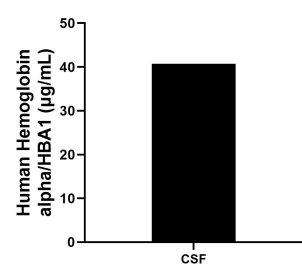
Selected Validation Data



Sandwich ELISA standard curve of MP00239-3, Human Hemoglobin alpha Recombinant Matched Antibody Pair - PBS only. 83185-4-PBS was coated to a plate as the capture antibody and incubated with serial dilutions of standard Ag6040.83185-3-PBS was HRP conjugated as the detection antibody. Range: 0.156-10 ng/mL



Serum of fifteen individual healthy human was measured. The Hemoglobin alpha concentration of detected samples was determined to be 41.2 pg/mL with a range of 14.8-96.6 ng/mL



The mean Hemoglobin alpha concentration was determined to be 40.7 µg/mL in Human CSF