

NRG1, isoform Alpha Recombinant Matched Antibody Pair, PBS Only

Catalog Number: **MP00232-6**

Capture Antibody Information

Catalog Number:
83251-4-PBS
Host:
Rabbit
Isotype:
IgG
Purification Method:
Protein A purification

Clone ID:
240067D3
Reactivity:
human
GenBank:
BC007675
Immunogen Catalog Number:
Ag35114

Conjugate:
Unconjugated
Full name:
neuregulin 1
Gene ID:
3084

Detection Antibody Information

Catalog Number:
83251-1-PBS
Host:
Rabbit
Isotype:
IgG
Purification Method:
Protein A purification

Clone ID:
240067A4
Reactivity:
human
GenBank:
BC007675
Immunogen Catalog Number:
Ag35114

Conjugate:
Unconjugated
Full name:
neuregulin 1
Gene ID:
3084

Applications

Tested Applications:
Sandwich ELISA

Range:
78.1-5000 pg/mL (Sandwich ELISA)

Recommended Dilutions:
It is recommended that this reagent should be titrated in each testing system to obtain optimal results.

Product Information

MP00232-6 targets NRG1, isoform Alpha in immunoassays as a matched antibody pair. Validated in Sandwich ELISA.

Capture antibody: NRG1 Recombinant antibody, PBS Only (Capture) 83251-4-PBS (240067D3). 100 µg. Concentration 1 mg/mL.

Detection antibody: NRG1, isoform Alpha Recombinant antibody, PBS Only (Detector) 83251-1-PBS (240067A4). 100 µg. Concentration 1 mg/mL.

Unconjugated rabbit recombinant monoclonal antibody pair in PBS only storage buffer at a concentration of 1 mg/mL, ready for conjugation. Created using Proteintech's proprietary in-house recombinant technology. Recombinant production enables unrivalled batch-to-batch consistency, easy scale-up, and future security of supply.

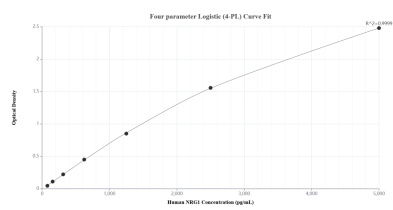
Matched antibody pairs are designed for use in a variety of assays and platforms that require matched antibody pairs.

Antibody use should be optimized for each application and assay.

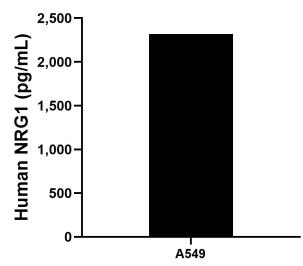
Storage

Storage:
Store at -80°C.
The product is shipped with ice packs. Upon receipt, store it immediately at -80°C
Storage buffer:
PBS only

Selected Validation Data



Sandwich ELISA standard curve of MP00232-6, Human NRG1, isoform Alpha Recombinant Matched Antibody Pair - PBS only. 83251-4-PBS was coated to a plate as the capture antibody and incubated with serial dilutions of standard Ag35114. 83251-1-PBS was HRP conjugated as the detection antibody. Range: 78.1-5000 pg/mL



The mean NRG1, isoform Alpha concentration was determined to be 2,318.1 pg/mL in A549 cell extract based on a 2.5 mg/mL extract load.