

# Mouse Angiopoietin-like 3/ANGPTL3 Recombinant Matched Antibody Pair, PBS Only

Catalog Number: **MP00227-2**

## Capture Antibody Information

**Catalog Number:**  
83165-2-PBS  
**Host:**  
Rabbit  
**Isotype:**  
IgG  
**Purification Method:**  
Protein A purification

**Clone ID:**  
230498C11  
**Reactivity:**  
mouse  
**GenBank:**  
NM\_013913.4

**Conjugate:**  
Unconjugated  
**Full name:**  
angiopoietin-like 3  
**Gene ID:**  
30924

## Detection Antibody Information

**Catalog Number:**  
83165-1-PBS  
**Host:**  
Rabbit  
**Isotype:**  
IgG  
**Purification Method:**  
Protein A purification

**Clone ID:**  
230498C5  
**Reactivity:**  
mouse  
**GenBank:**  
NM\_013913.4

**Conjugate:**  
Unconjugated  
**Full name:**  
angiopoietin-like 3  
**Gene ID:**  
30924

## Applications

**Tested Applications:**  
Sandwich ELISA

**Range:**  
31.25-2000 pg/mL (Sandwich ELISA)

**Recommended Dilutions:**  
It is recommended that this reagent should be titrated in each testing system to obtain optimal results.

## Product Information

MP00227-2 targets Angiopoietin-like 3/ANGPTL3 in immunoassays as a matched antibody pair. Validated in Sandwich ELISA.

Capture antibody: Mouse Angiopoietin-like 3/ANGPTL3 Recombinant antibody, PBS Only (Capture/Detector) 83165-2-PBS (230498C11). 100 µg. Concentration 1 mg/mL.

Detection antibody: Mouse Angiopoietin-like 3/ANGPTL3 Recombinant antibody, PBS Only (Capture/Detector) 83165-1-PBS (230498C5). 100 µg. Concentration 1 mg/mL.

Unconjugated rabbit recombinant monoclonal antibody pair in PBS only storage buffer at a concentration of 1 mg/mL, ready for conjugation. Created using Proteintech's proprietary in-house recombinant technology. Recombinant production enables unrivalled batch-to-batch consistency, easy scale-up, and future security of supply.

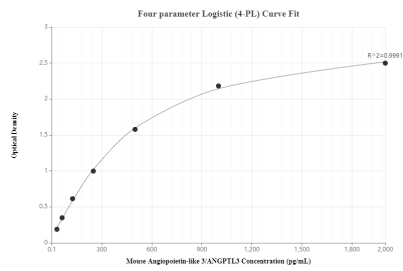
Matched antibody pairs are designed for use in a variety of assays and platforms that require matched antibody pairs.

Antibody use should be optimized for each application and assay.

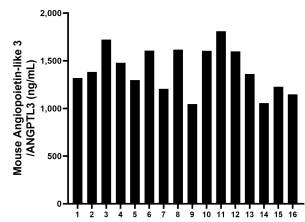
## Storage

**Storage:**  
Store at -80°C.  
**The product is shipped with ice packs. Upon receipt, store it immediately at -80°C**  
**Storage buffer:**  
PBS only

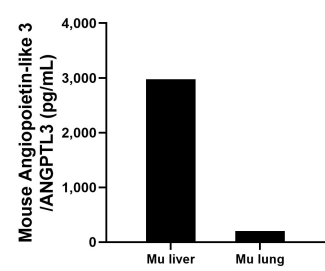
## Selected Validation Data



Sandwich ELISA standard curve of MP00227-2, Mouse Angiopoietin-like 3/ANGPTL3 Monoclonal Matched Antibody Pair - PBS only. 83165-2-PBS was coated to a plate as the capture antibody and incubated with serial dilutions of standard Eg0662. 83165-1-PBS was HRP conjugated as the detection antibody. Range: 31.25-2000 pg/mL



Serum of sixteen individual healthy mice were measured. The Mouse Angiopoietin-like 3/ANGPTL3 concentration of detected samples was determined to be 1,404.9 ng/mL with a range of 1,046.2-1,810.6 ng/mL



Organs from 2-3 mice were removed, rinsed in PBS, and kept on ice. The organs were then homogenized using a tissue homogenizer and cultured in RPMI supplemented with 10% fetal bovine serum, 2 mM L-glutamine, 100 U/mL penicillin, and 100 mg/mL streptomycin sulfate. Cell culture supernatants from liver tissue measured 2,972.7 pg/mL and lung tissue measured 205.3 pg/mL